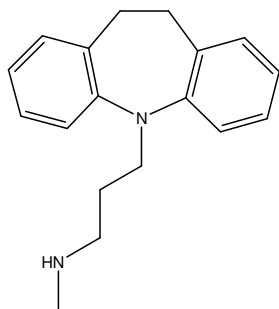


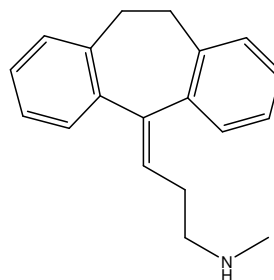
三環系抗うつ剤

Tricyclic antidepressants

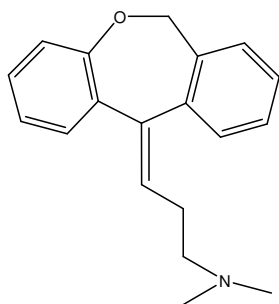
5種類の三環系抗うつ薬を CAPCELL PAK C₁₈ KG S5 (4.6 mm i.d. x 250 mm) で分析した例を示します。



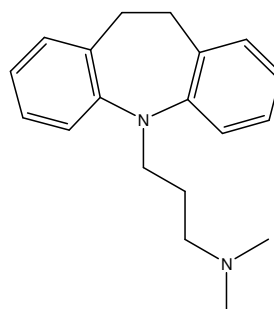
1. デシプラミン (50 µg/mL)
Desipramine (M.W. 266.4)



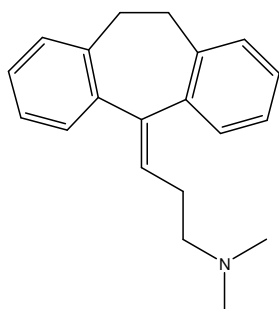
2. ノルトリプチリン (50 µg/mL)
Nortriptyline (M.W. 263.4)



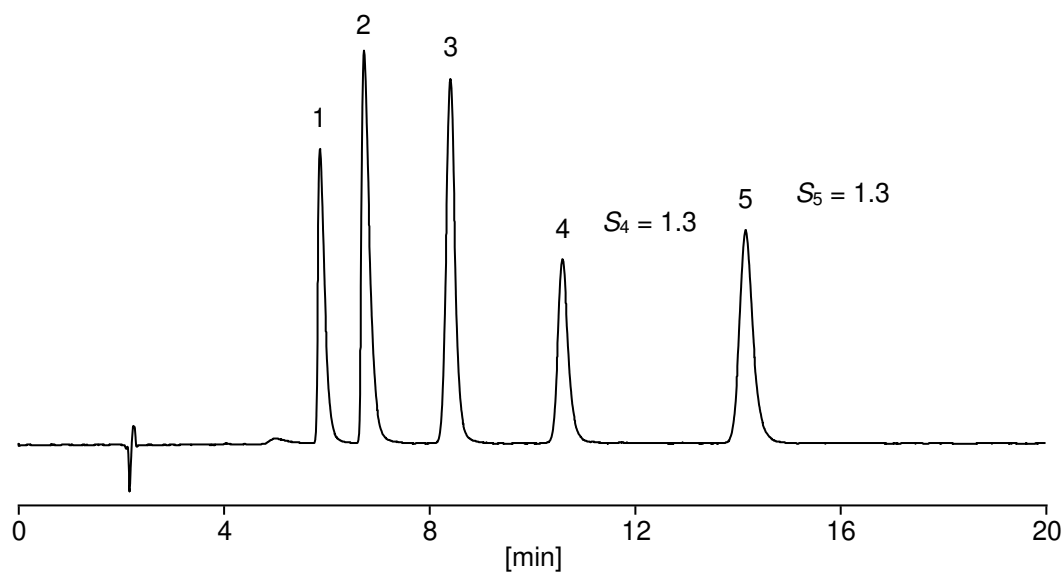
3. ドキセピン (50 µg/mL)
Doxepin (M.W. 279.4)



4. イミプラミン (50 µg/mL)
Imipramine (M.W. 280.4)



5. アミトリプチリン (50 µg/mL)
Amitriptyline (M.W. 277.4)



【HPLC Conditions】

Column : CAPCELL PAK C₁₈ KG S5 ; 4.6 mm i.d. x 250 mm
 Mobile phase : 10 mmol/L CH₃COONH₄ / CH₃OH = 35 / 65
 Flow rate : 1 mL/min
 Temperature : 40 °C
 Detection : UV 210 nm
 Inj. vol. : 5 μL
 Sample dissolved in : Desipramine, nortriptyline and doxepin were separately dissolved in 50 vol% methanol at 1 mg/mL. Imipramine and amitriptyline were separately dissolved in methanol at 1 mg/mL. 50 μL of all solutions were mixed together and methanol was added to the mixture to make 1 mL.
 ※ 1 μg/mL = 1 ppm