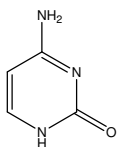


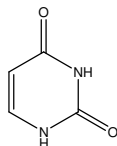
核酸塩基、ヌクレオシド

Nucleic acids and Nucleosides

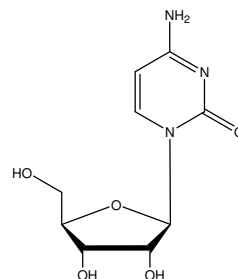
核酸塩基及びヌクレオシドを CAPCELL PAK C₁₈ MGII S2 (2.0 mm i.d. x 100 mm) を用いて超高速分析した例を示します。5 分以内にすべて溶出し、良好な分離を示しました。



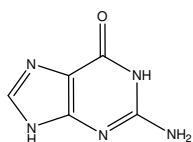
1. シトシン (10 µg/mL)
Cytosine (M.W. 111.1)



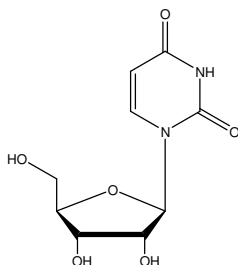
2. ウラシル (10 µg/mL)
Uracil (M.W. 112.1)



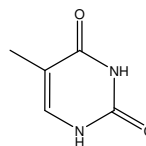
3. シチジン (10 µg/mL)
Cytidine (M.W. 243.2)



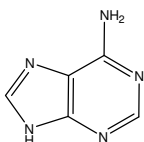
4. グアニン (10 µg/mL)
Guanine (M.W. 151.1)



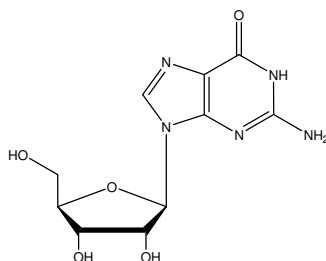
5. ウリジン (10 µg/mL)
Uridine (M.W. 244.2)



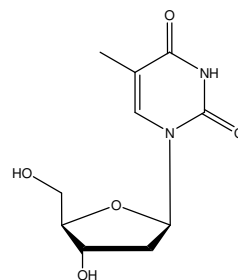
6. チミン (10 µg/mL)
Thymine (M.W. 126.1)



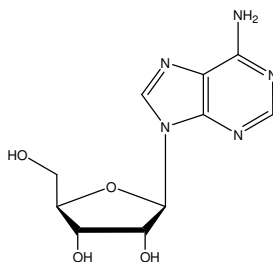
7. アデニン (10 µg/mL)
Adenine (M.W. 135.1)



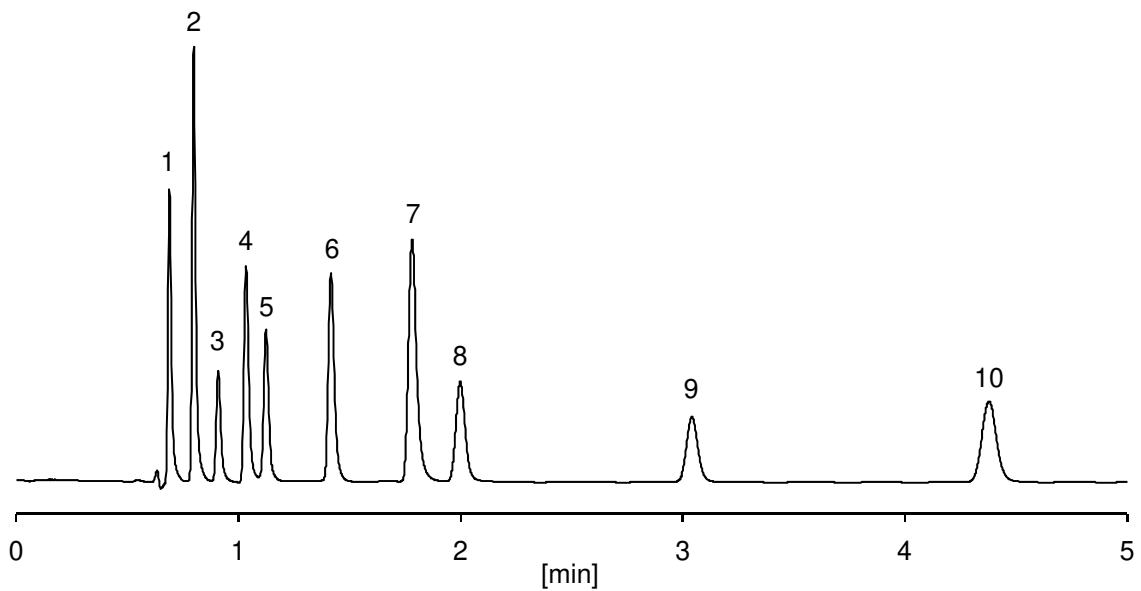
8. グアノシン (10 µg/mL)
Guanosine (M.W. 283.2)



9. チミジン (10 µg/mL)
Thymidine (M.W. 242.2)



10. アデノシン (10 µg/mL)
Adenosine (M.W. 267.2)



【HPLC Conditions】

Column : CAPCELL PAK C₁₈ MGII S2 ; 2.0 mm i.d. x 100 mm
 Mobile phase : A) 10 mmol/L HCOONH₄
 B) 10 mmol/L HCOONH₄, CH₃CN
 B 5 % (0 min) -> 10 % (5 min) -> 5 % (5.1 min) Gradient
 Flow rate : 500 μL/min
 Temperature : 30 °C
 Detection : UV 260 nm
 Inj. vol. : 2 μL
 Sample dissolved in : Mobile phase
 ※ 1 μg/mL = 1 ppm