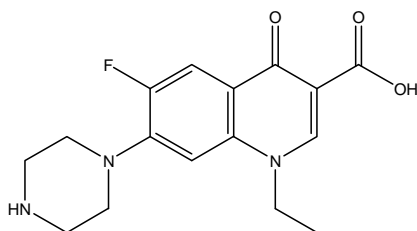


キノロン剤

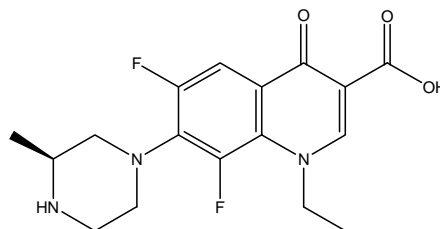
Quinolone agents

合成抗菌剤である6種類のキノロン剤の一斉分析について、CAPCELL PAK C₁₈ MGIII-H S3 (2.0 mm i.d. x 50 mm) を用いた分析例を紹介します。

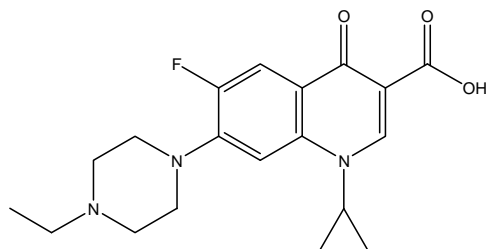
Quinolone is one of the synthetic antibacterial agents. Shown here is the simultaneous analysis of 6 quinolone agents with CAPCELL PAK C₁₈ MGIII-H S3 (2.0 mm i.d. x 50 mm).



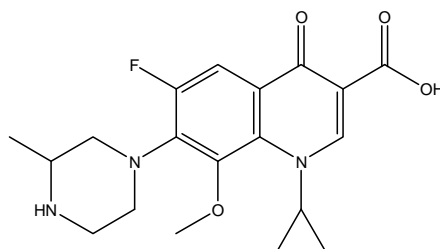
1. ノロフロキサシン (50 µg/mL)
Norfloxacin (M.W. 319.3)



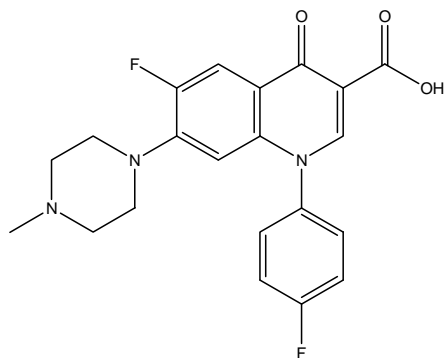
2. ロメフロキサシン (50 µg/mL)
Lomefloxacin (M.W. 351.4)



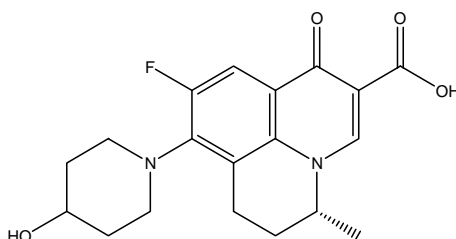
3. エンフロフロキサシン (50 µg/mL)
Enrofloxacin (M.W. 359.4)



4. ガチフロキサシン (50 µg/mL)
Gatifloxacin (M.W. 375.4)

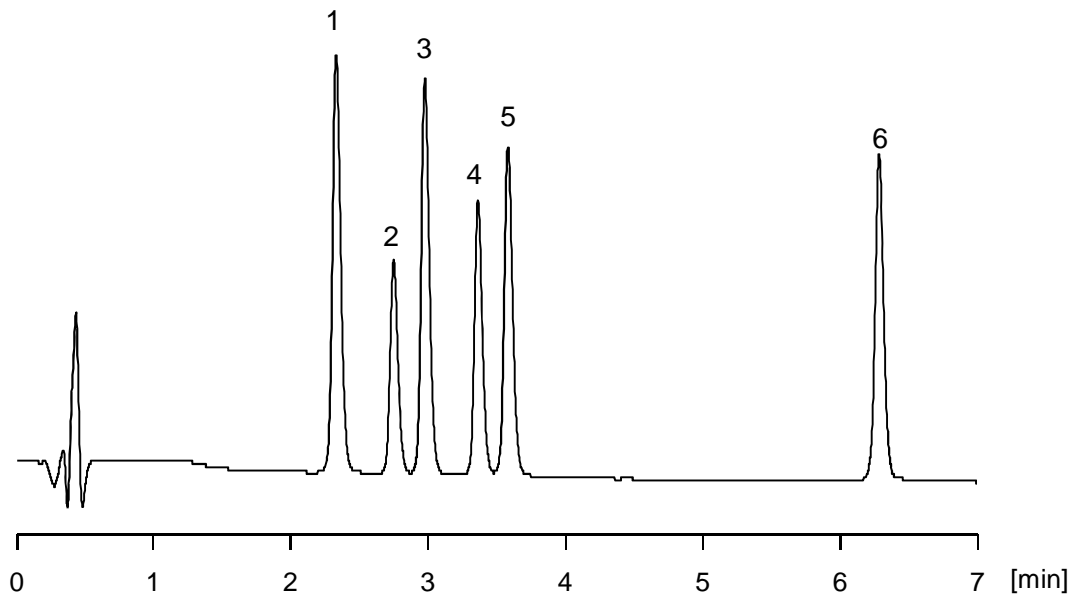


5. ジフロキサシン (50 µg/mL)
Difloxacin (M.W. 399.4)



6. ナジフロキサシン (50 µg/mL)
Nadifloxacin (M.W. 360.4)

1. ノロフロキサシン
Norfloxacin
2. ロメフロキサシン
Lomefloxacin
3. エンロフロキサシン
Enrofloxacin
4. ガチフロキサシン
Gatifloxacin
5. ジフロキサシン
Difloxacin
6. ナジフロキサシン
Nadifloxacin



【HPLC Conditions】

Column : CAPCELL PAK C₁₈ MGIII-H S3 ; 2.0 mm i.d. x 50 mm
 Mobile phase : A) 10 mmol/L HCOONH₄ (pH 3, HCOOH)
 B) CH₃CN
 B 10 % (0 min) -> 40 % (7 min) -> 10 % (7.1 min) Gradient
 Flow rate : 400 μL/min
 Temperature : 40 °C
 Detection : UV 254 nm
 Inj. vol. : 2 μL
 Sample dissolved in : Each standard compound was separately dissolved in CH₃OH at 1 mg/mL. Equal amount of all the solutions were mixed together, and further diluted to 50 mg/mL with water.

※ 1 μg/mL = 1 ppm