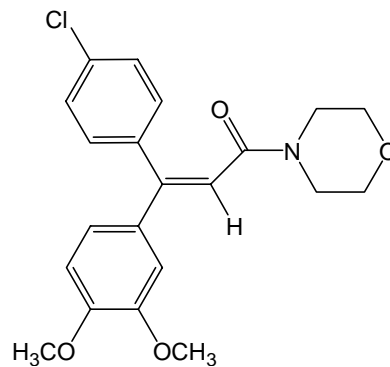


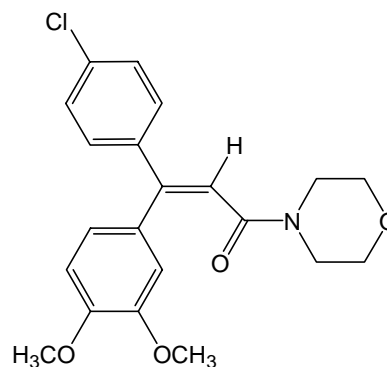
## 1. ジメトモルフ E体 (50 µg/mL)

Dimethomorph (E) (M.W. 387.9)



## 2. ジメトモルフ Z体 (50 µg/mL)

Dimethomorph (Z) (M.W. 387.9)



## 【HPLC Conditions】

Column	: CAPCELL PAK C <sub>18</sub> MG S5 ; 2.0 mm i.d. x 250 mm
Mobile phase	: H <sub>2</sub> O / CH <sub>3</sub> OH = 40 / 60
Flow rate	: 200 µL/min
Temperature	: 40 °C
Detection	: UV 250 nm
Inj. vol.	: 2 µL
Sample dissolved in	: 50 vol% CH <sub>3</sub> OH (50 µg/mL as Dimethomorph) 1 µg/mL = 1 ppm