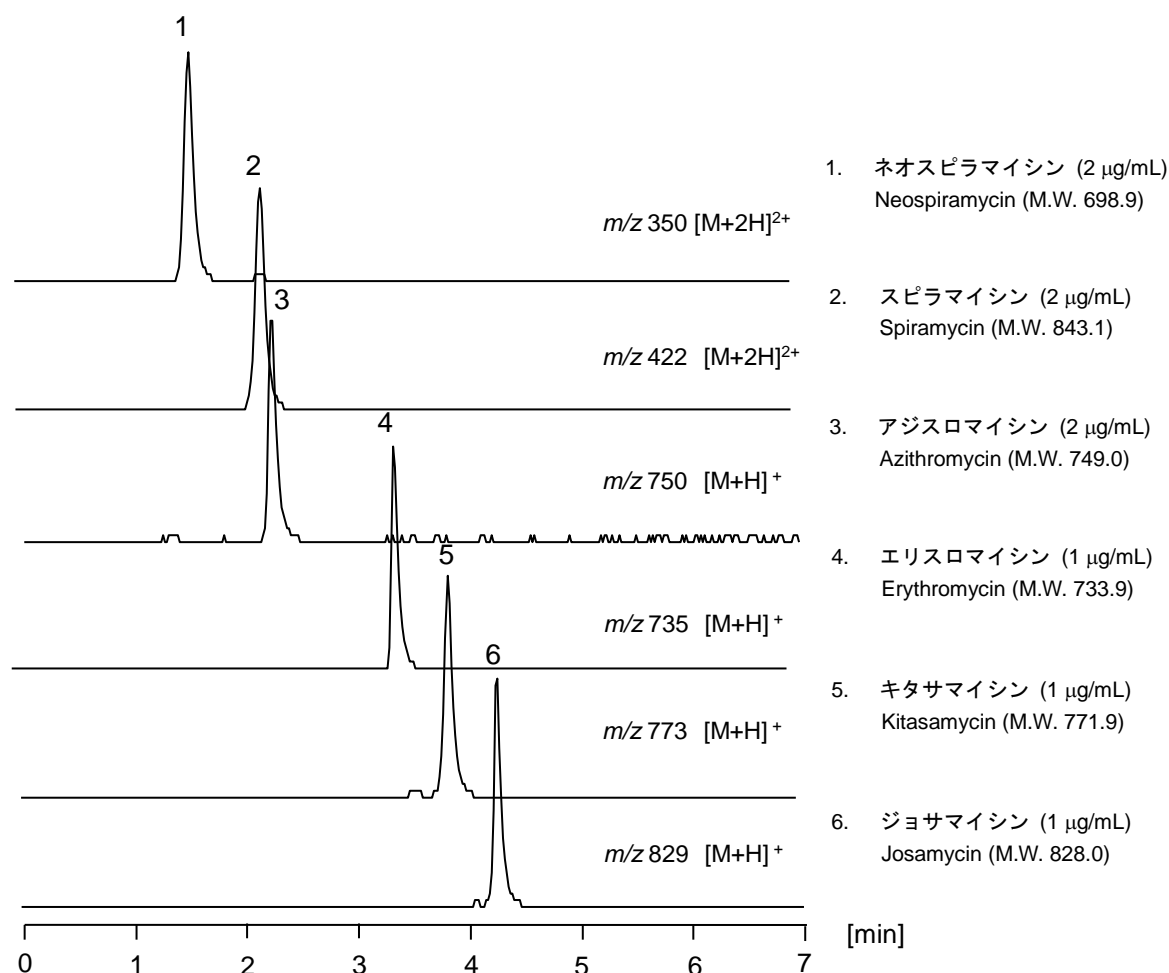


マクロライド系抗生物質

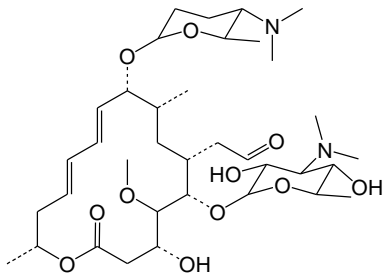
Macrolide antibiotics

マクロライド系抗生物質 6 成分を CAPCELL PAK C₁₈ MGIII-H S3 (2.0 mm i.d. x 100 mm) を用い、流速を通常の 2 倍で分析した例を示します。

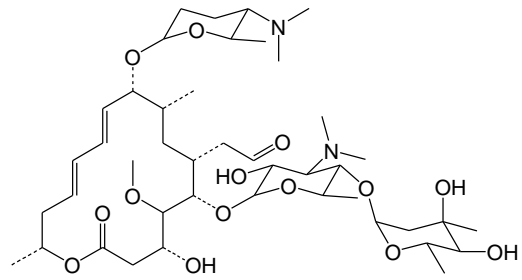


【HPLC Conditions】

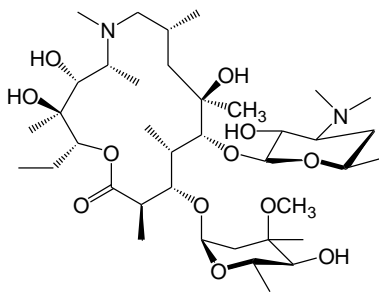
Column : CAPCELL PAK C₁₈ MGIII-H S3 ; 2.0 mm i.d. x 100 mm
 Mobile phase : A) 0.1 vol% HCOOH B) 0.1 vol% HCOOH, CH₃CN
 B 20 % (0 min) -> 60 % (4 min) -> 60 % (7 min)
 -> 20 % (7.1 min) Gradient
 Flow rate : 400 μL/min
 Temperature : 40 °C
 Detection : MS
 Ionization : ESI Positive
 Inj. vol. : 2 μL
 Sample dissolved in : Standard compounds were dissolved in 50 vol% CH₃OH at
 1000 μg /mL, and then, diluted with 20 vol% CH₃CN.



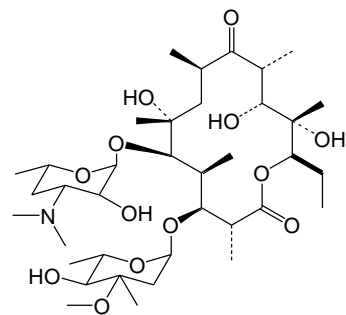
1. Neospiramycin



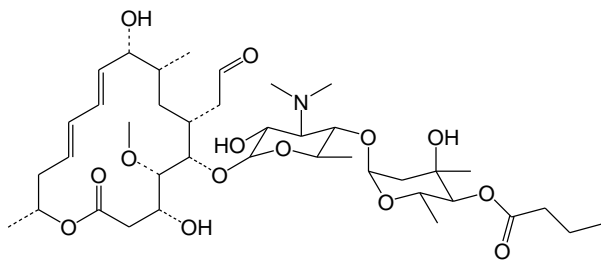
2. Spiramycin



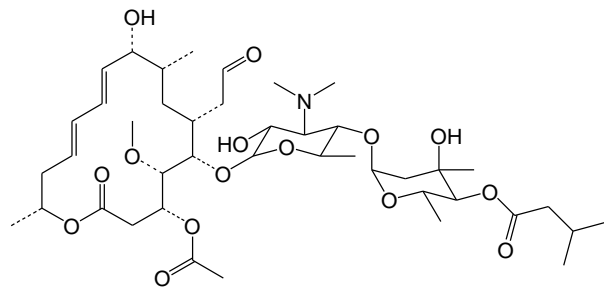
3. Azithromycin



4. Erythromycin



5. Kitasamycin



6. Josamycin

3. の試料提供: 東和薬品株式会社さま