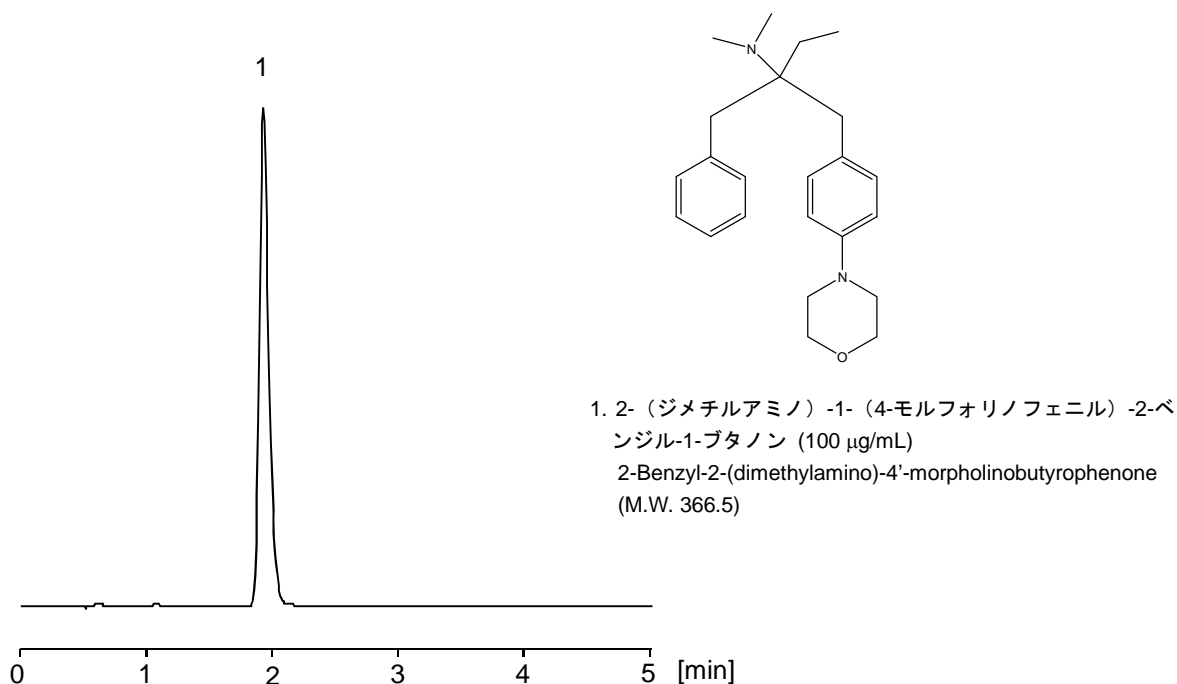


## 添加剤

## Additive agent

塩基性化合物である 2- (ジメチルアミノ) -1- (4-モルフォリノフェニル) -2-ベンジル-1-ブタノン (IRGACURE 369) を CAPCELL PAK C<sub>18</sub> MGII S3 (2.0 mm i.d. x 50 mm) を用いて分析したところ、良好なピーク形状で溶出されています。

The basic compound 2- (dimethylamino) -1- (4-morpholino-phenyl) -2-benzyl-1-butanone (IRGACURE 369) is analyzed with CAPCELL PAK C<sub>18</sub> MGII S3 (2.0 mm id x 50 mm) and eluted with excellent peak shape.



### 【HPLC Conditions】

Column	: CAPCELL PAK C <sub>18</sub> MGII S3 ; 2.0 mm i.d. x 50 mm
Mobile phase	: 10 mmol/L HCOONH <sub>4</sub> / CH <sub>3</sub> CN = 20 / 80
Flow rate	: 200 µL/min
Temperature	: 40 °C
Detection	: PDA 325 nm
Inj. vol.	: 1 µL
Sample dissolved in	: Standard compound was dissolved in CH <sub>3</sub> OH at 1 mg/mL, and diluted with mobile phase to 100 µg/mL.
	※ 1 µg/mL = 1 ppm