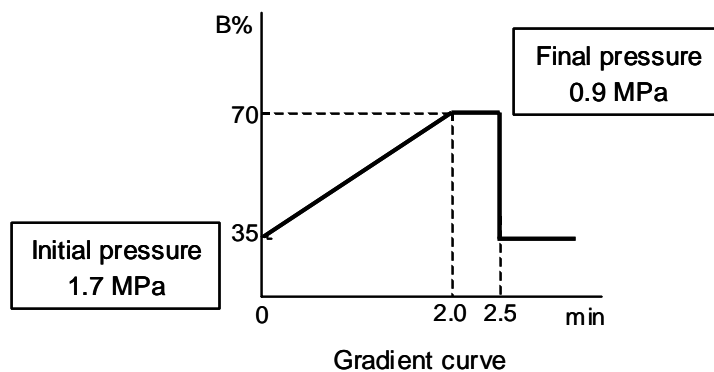
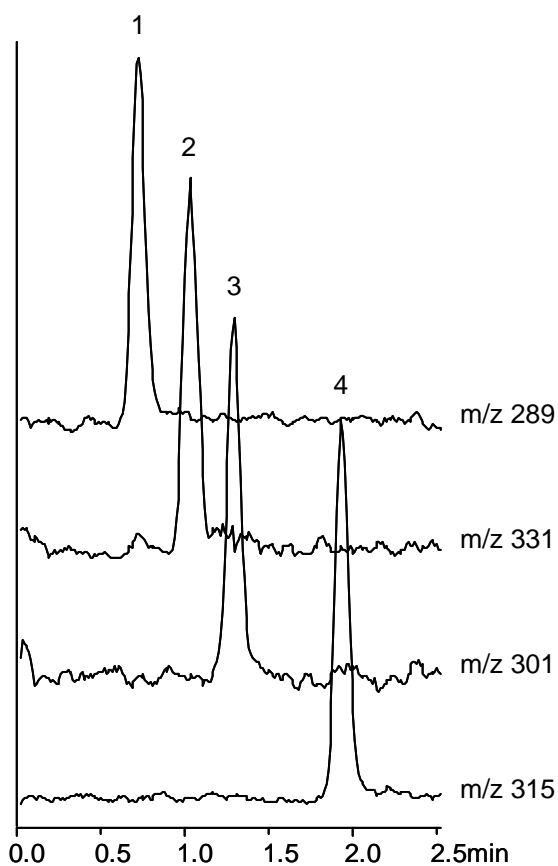


ホルモン

Hormones

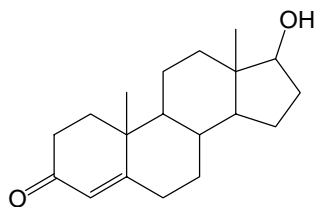
著しく短いセミマイクロカラムを使用することで、低圧下で高速分析をすることが可能となります。

An extremely short semi-microcolumn makes it possible to run a rapid analysis under a low pressure.

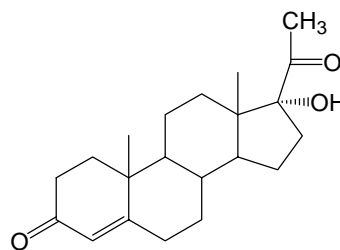


【HPLC Conditions】

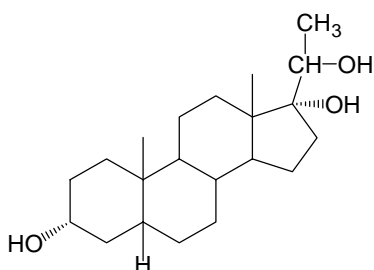
Column : CAPCELL PAK C₁₈ MGII S3 ; 1.5 mm i.d. x 10 mm
Mobile phase : A) 0.1 vol% HCOOH, B) 0.1 vol% HCOOH in CH₃CN
B 35% (0.0 min) -> 70% (2.0 min) -> 70% (2.5 min) -> 35% (2.5 min) Gradient
Flow rate : 200 μL/min
Temperature : 40 °C
Detection : MS ESI Positive
Inj. vol. : 2 μL
Sample dissolved in : All compounds were separately dissolved in acetonitrile at 100 μg/mL. Pregnanetriol solution (20 μL) and the other three solutions (10 μL each) were mixed together. 50% acetonitrile was added to the mixture to make it 1 mL.
※ 1 μg/mL = 1 ppm



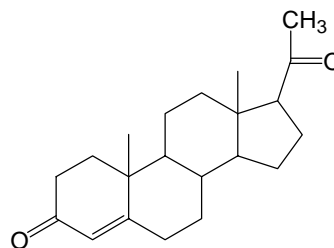
1. Testosterone



2. 17α-Hydroxyprogesterone



3. Pregnanetriol



4. Progesterone