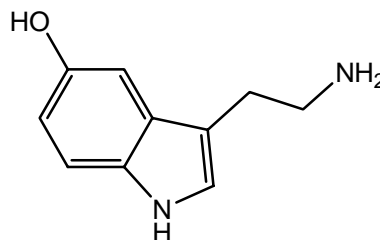
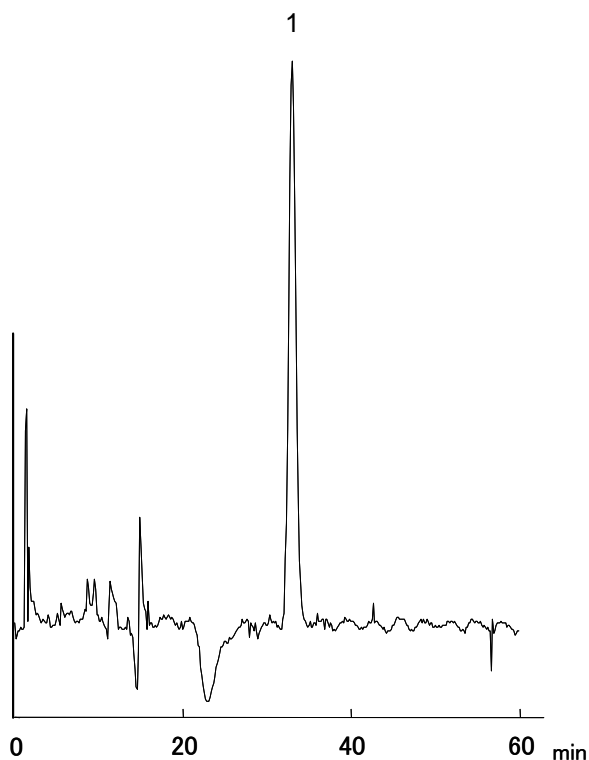


1. セロトニン (100 ng/mL)
Serotonin (M.W. 176.2)

**【HPLC Conditions】**

- Column : CAPCELL PAK C₁₈ MG S5 ; 1.5 mm i.d. x 150 mm
Mobile phase : Phosphoric acid was added to 100 mmol/L KH₂PO₄ until its pH value reaches 3.4. Sodium octane sulfate was dissolved in the pH-adjusted solution at 4 mmol/L. The solution and acetonitrile were mixed at the ratio, 95 / 5. Thereafter, EDTA-2Na was dissolved in the mixed solution at 0.02 mmol/L.
Flow rate : 100 μL/min
Temperature : 40 °C
Detection : ECD 750 mV
Inj. vol. : 1 μL
Sample dissolved in : Its 1-mg/mL solution (in methanol) was diluted to 100 ng/mL with the mobile phase.
※ 1 μg/mL = 1 ppm