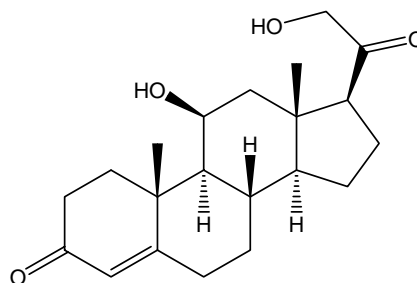
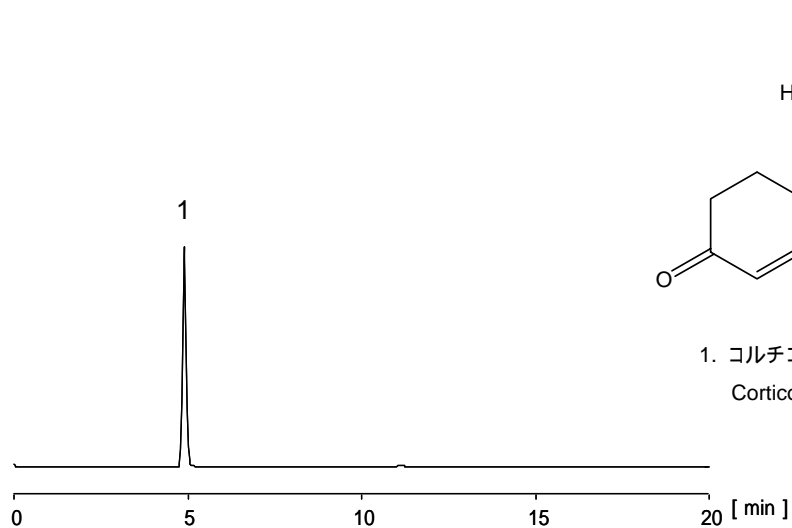


コルチコステロン

Corticosterone



1. コルチコステロン (100 $\mu\text{g/mL}$)
Corticosterone (M.W. 346.5)

[HPLC Conditions]

Column : CAPCELL PAK C₁₈ MGII S5 ; 2.0 mm i.d. x 150 mm
 Mobile phase : H₂O / CH₃CN = 60 / 40
 Flow rate : 200 $\mu\text{L/min}$
 Temperature : 40 °C
 Detection : UV 240 nm
 Inj. vol. : 2 μL
 Sample dissolved in : Mobile phase
 1 $\mu\text{g/mL}$ = 1 ppm