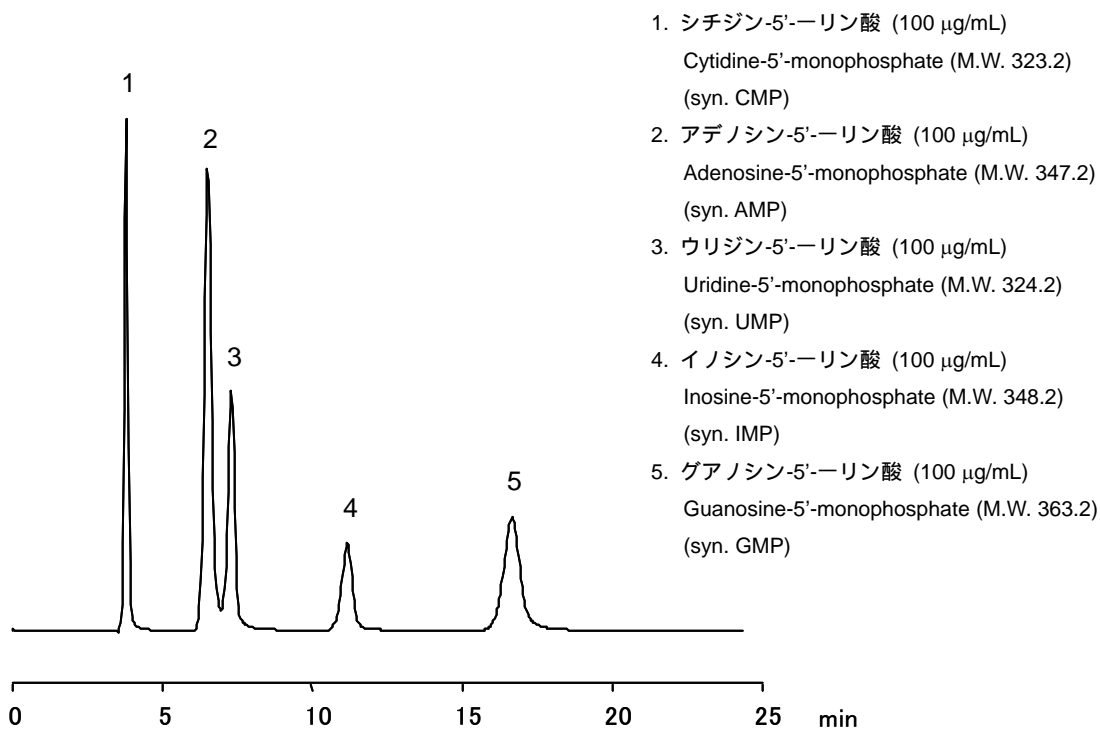
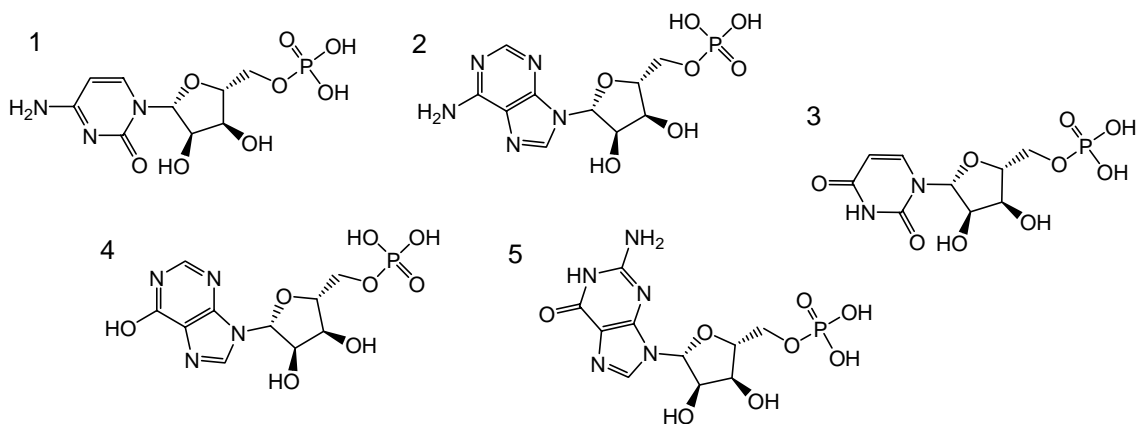


ヌクレオチド

Nucleotides



【HPLC Conditions】

Column : CAPCELL PAK NH_2 UG80 S5 ; 2.0 mm i.d. x 250 mm
 Mobile phase : 50 mmol/L $(\text{NH}_4)_2\text{HPO}_4$ (adjusted at pH 3 with phosphoric acid)
 Flow rate : 200 $\mu\text{L}/\text{min}$
 Temperature : 40 $^\circ\text{C}$
 Detection : UV 260 nm
 Inj. Vol. : 2 μL
 Sample dissolved in : Mobile phase (100 $\mu\text{g/mL}$)
 ※ 1 $\mu\text{g/mL}$ = 1 ppm