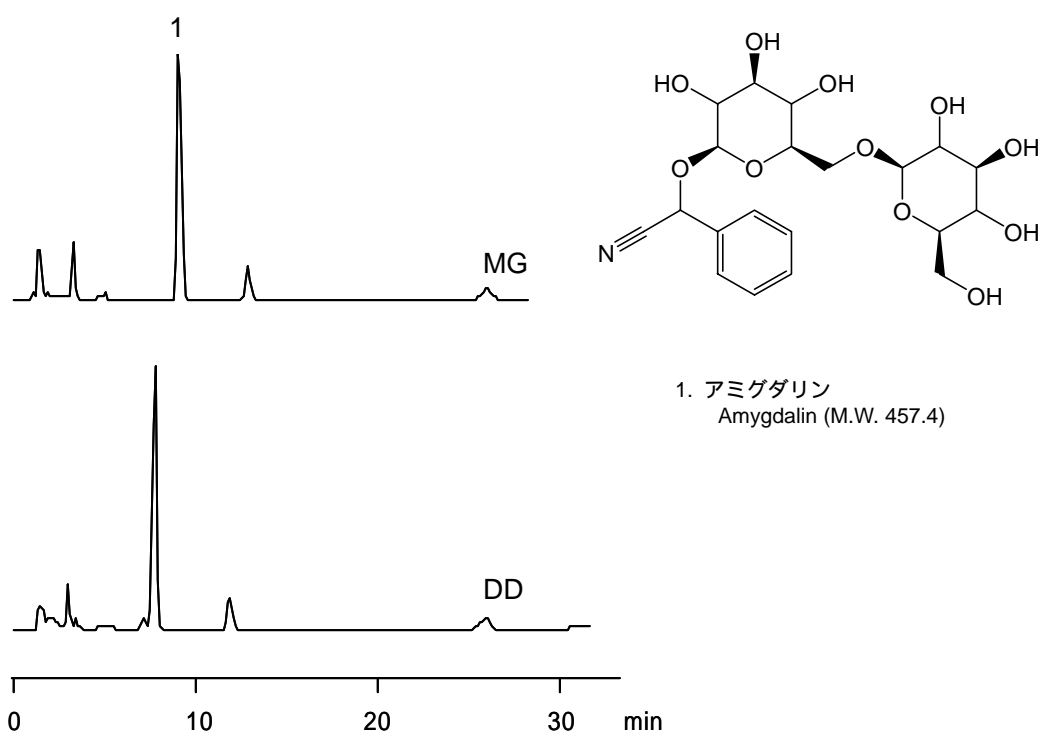


## キョウニン中アミグダリン

## Amygdalin

アンズやモモの種子をキョウニンといい，麻杏甘石湯，潤腸湯などの漢方に用いられています．キョウニンに含まれるアミグダリンには，鎮痛，鎮咳，去痰，潤腸通便作用があります．

Apricot kernel (seeds of apricot and peach) is used for Chinese medicines. Amygdalin, one of its constituents, is known to have analgesic, antitussive, and laxative properties.



### 【HPLC Conditions】

- Column : CAPCELL PAK C<sub>18</sub> MG S5 ; 4.6 mm i.d. x 150 mm  
CAPCELL PAK C<sub>8</sub> DD S5 ; 4.6 mm i.d. x 150 mm
- Mobile phase : CH<sub>3</sub>OH / H<sub>2</sub>O = 1 / 4
- Flow rate : 1 mL/min
- Temperature : R.T.
- Detection : UV 210 nm
- Inj. vol. : 10 μL
- Pretreatment : Apricot kernel was cut into small pieces, and ground in a mortar with a pestle. 0.5 g of the ground apricot kernel was dispersed in a mixed solvent (50 mL, water / methanol = 1 / 1). The dispersion was sonicated (30 min) and filtered with filter paper. A small amount of the filtered liquid was further filtered with a 0.2-μm filter, and introduced to HPLC.
- 1 μg/mL = 1 ppm