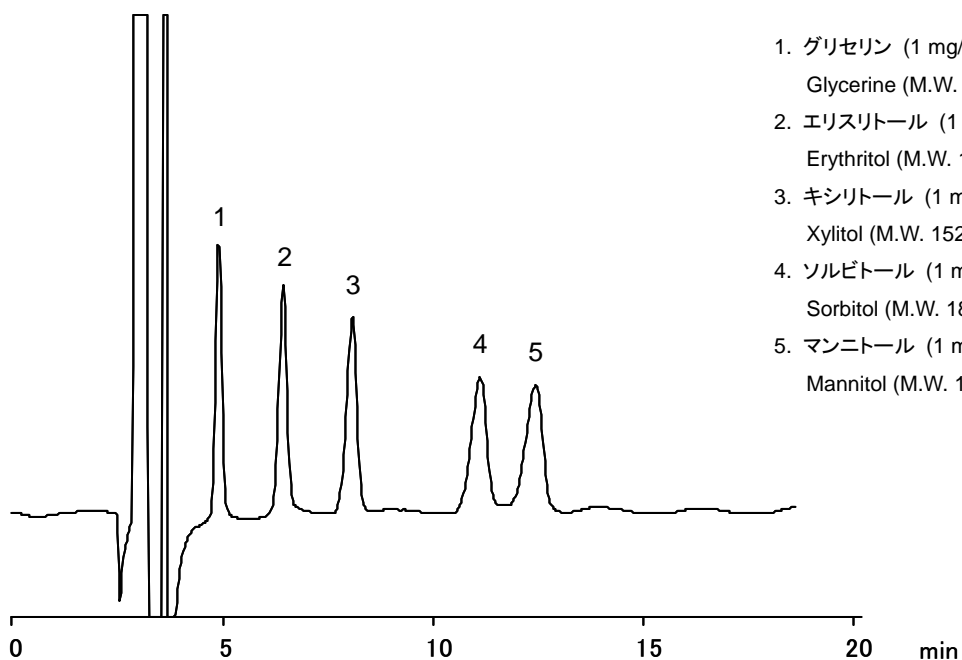
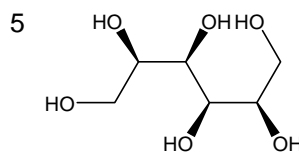
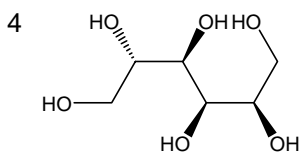
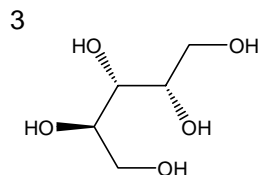
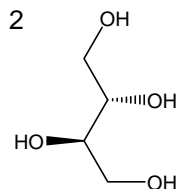
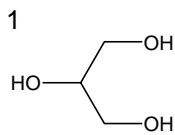


糖アルコール

Sugar alcohols



1. グリセリン (1 mg/mL)
Glycerine (M.W. 92.1)
2. エリスリトール (1 mg/mL)
Erythritol (M.W. 122.1)
3. キシリトール (1 mg/mL)
Xylitol (M.W. 152.2)
4. ソルビトール (1 mg/mL)
Sorbitol (M.W. 182.2)
5. マンニトール (1 mg/mL)
Mannitol (M.W. 182.2)

【HPLC Conditions】

- Column : CAPCELL PAK NH₂ UG80 S5 ; 2.0 mm i.d. x 250 mm
- Mobile phase : H₂O / CH₃CN = 10 / 90
- Flow rate : 200 μL/min
- Temperature : 40 °C
- Detection : RI
- Inj. vol. : 2 μL
- Sample dissolved in : Each compound was separately dissolved in water at 10 mg/mL. 100 μL of all the solutions were mixed together. The mixture was diluted to 1 mL by adding acetonitrile.
- ※ 1 μg/mL = 1 ppm