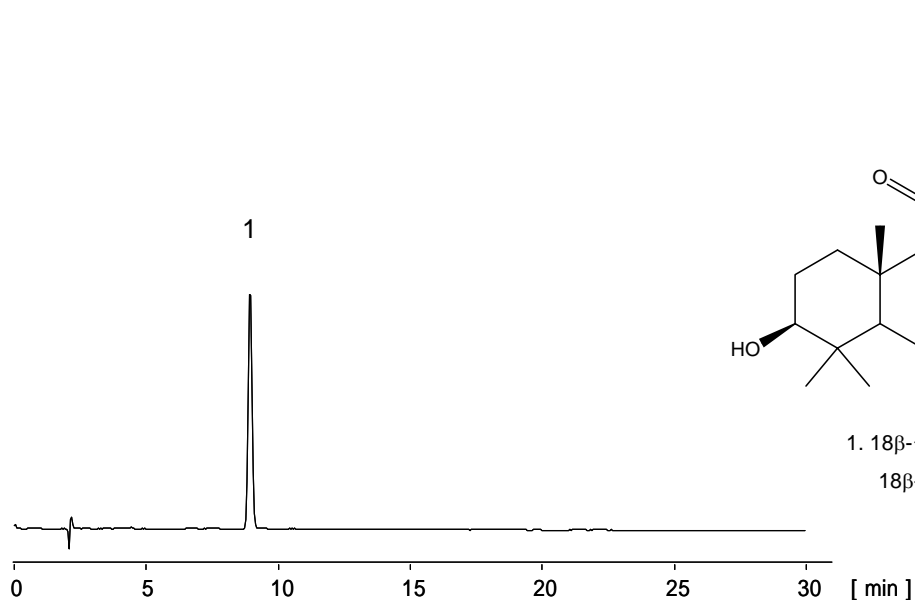


18β-グリチルレチン酸

18β-Glycyrrhetic acid



1. 18β-グリチルレチン酸 (100 μg/mL)  
18β-Glycyrrhetic acid (M.W. 470.7)

[HPLC Conditions]

Column : CAPCELL PAK C<sub>18</sub> MGII S5 ; 2.0 mm i.d. x 250 mm  
Mobile phase : 0.2 vol% H<sub>3</sub>PO<sub>4</sub> / CH<sub>3</sub>CN = 25 / 75  
Flow rate : 200 μL/min  
Temperature : 40 °C  
Detection : UV 230 nm  
Inj. vol. : 2 μL  
Sample dissolved in : Mobile phase  
1 μg/mL = 1 ppm