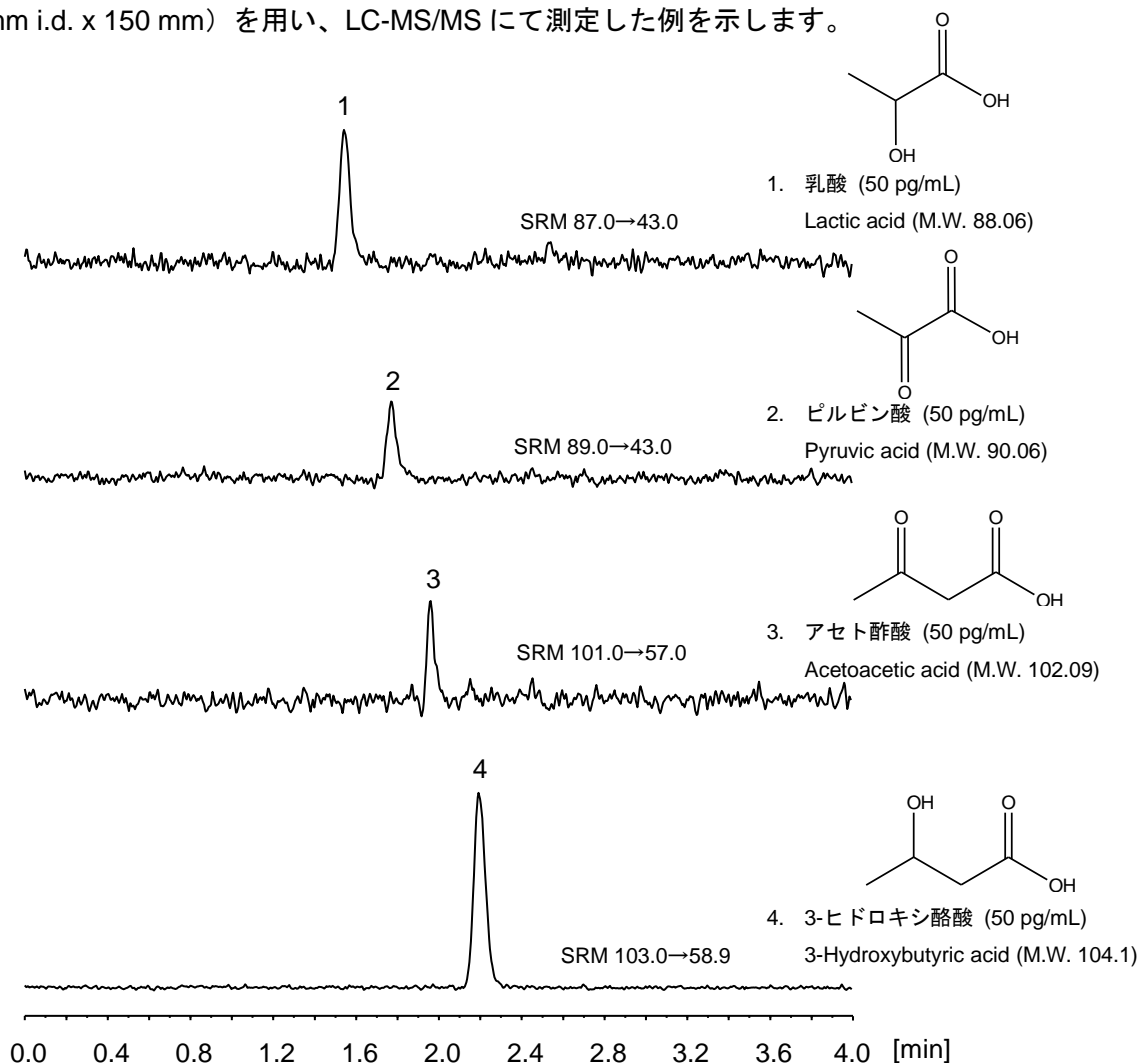


エネルギー代謝に関与している4種類の有機酸について、CAPCELL PAK ADME S5 (2.1 mm i.d. x 150 mm) を用い、LC-MS/MSにて測定した例を示します。



【HPLC Conditions】

Column : CAPCELL PAK ADME S5 ; 2.1 mm i.d. x 150 mm
 Mobile phase : 0.1 vol% CH₃COOH, H₂O / CH₃OH = 85 / 15
 Flow rate : 300 μL/min
 Temperature : 40 °C
 Detection : MS
 Ionization : ESI Negative
 Inj. vol. : 1 μL
 Sample dissolved in : H₂O

[Reference] Rapid quantification of metabolic intermediates in blood by liquid chromatography-tandem mass spectrometry to investigate congenital lactic acidosis : Analytica Chimica Acta 942 (2016) 50-57