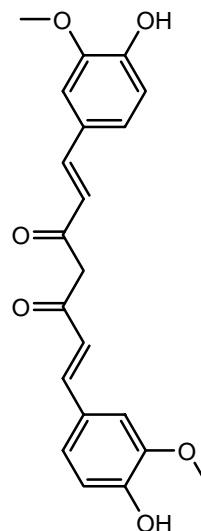
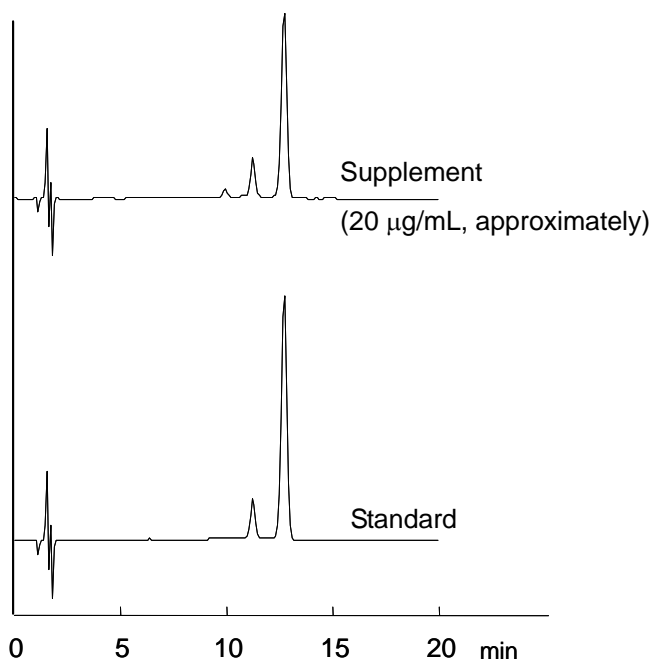


1. クルクミン (20  $\mu\text{g/mL}$ )  
Curcumin (M.W. 368.4)

**【HPLC Conditions】**

- Column : CAPCELL PAK C<sub>18</sub> MGII S5 ; 4.6 mm i.d. x 150 mm  
Mobile phase : Trifluoroacetic acid was added to a solution (H<sub>2</sub>O / CH<sub>3</sub>CN = 55 / 45) at 0.1 vol%.  
Flow rate : 1 mL/min  
Temperature : 40 °C  
Detection : UV 420 nm  
Inj. vol. : 5  $\mu\text{L}$   
Pretreatment : The standard compound was dissolved in the mobile phase at 20  $\mu\text{g/mL}$ . The content of the supplement was diluted with methanol so that the concentration of curcumin be 1 mg/mL, approximately, and sonicated for five minutes. After leaving it for a while the upper layer was filtered with a 0.2- $\mu\text{m}$  filter, diluted with methanol at 20  $\mu\text{g/mL}$ , and introduced to HPLC.  
※ 1  $\mu\text{g/mL}$  = 1 ppm