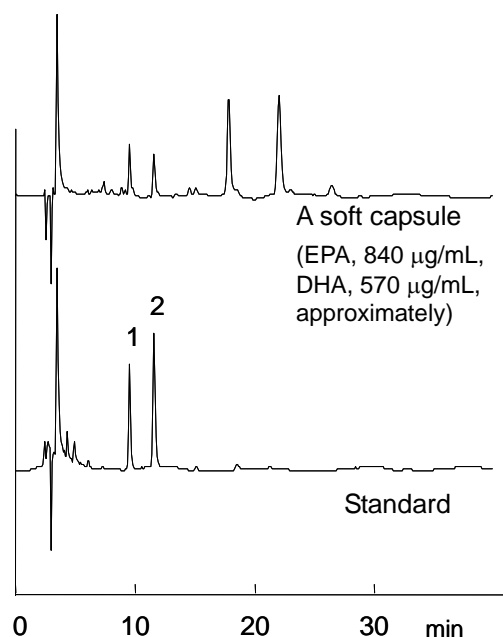
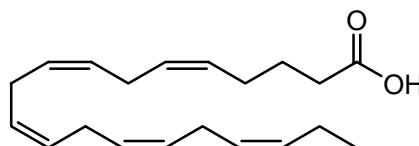


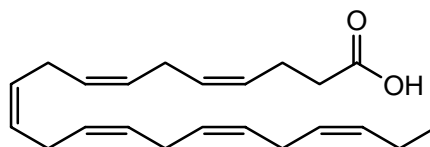
エイコサペンタエン酸, ドコサヘキサエン酸 Eicosapentaenoic acid, Docosahexaenoic acid



1. エイコサペンタエン酸 (10 µg/mL)  
Eicosapentaenoic acid (EPA) (M.W. 302.5)



2. ドコサヘキサエン酸 (10 µg/mL)  
Docosahexaenoic acid (DHA) (M.W. 328.5)



【HPLC Conditions】

- Column : CAPCELL PAK C<sub>18</sub> MGII S5 ; 4.6 mm i.d. x 250 mm
- Mobile phase : Trifluoroacetic acid was added to a solution (water / methanol = 10 / 90) at 0.1 vol%.
- Flow rate : 1 mL/min
- Temperature : 40 °C
- Detection : UV 215 nm
- Inj. vol. : 5 µL
- Pretreatment : The standard compounds were dissolved in methanol at 10 µg/mL. The content of the soft capsule was diluted 50-fold with the mobile phase, sonicated for five minutes, and left until being separated to two layers. The upper layer was filtered with a 0.2-µm filter and introduced to HPLC.
- ※ 1 µg/mL = 1 ppm