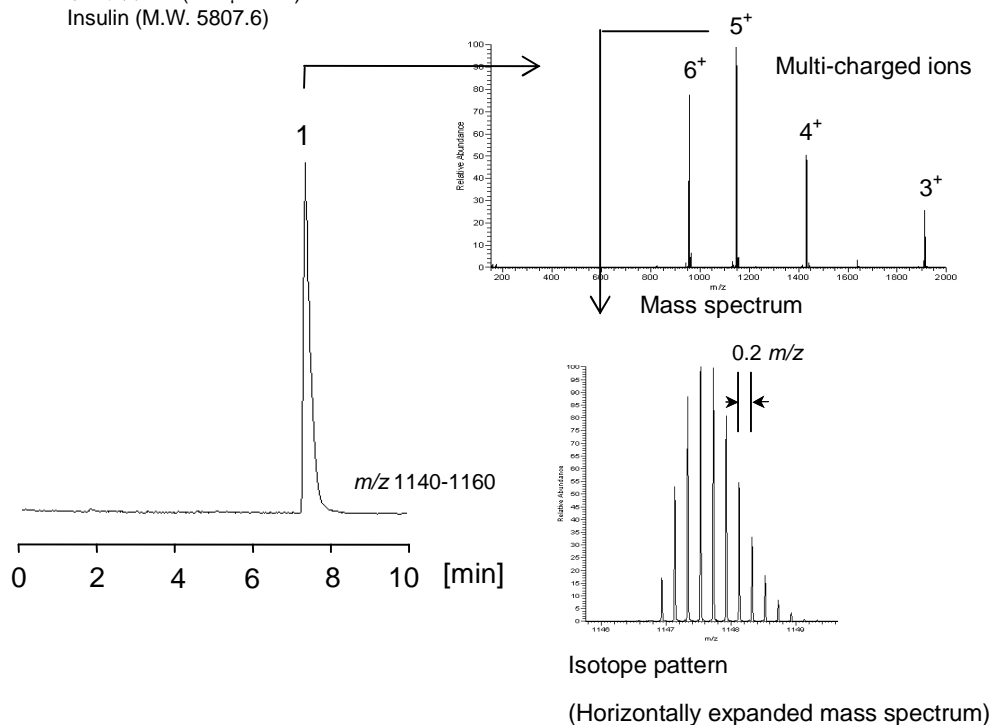


ペプチド製剤，インスリンを Proteonavi (2.0 mm i.d. x 150 mm) を用い分析した例を示します。

Insulin, one of the therapeutic polypeptides, was analyzed with LC-MS using Proteonavi (2.0 mm i.d. x 150 mm).

1. インスリン (500 $\mu\text{mol/L}$)
Insulin (M.W. 5807.6)



[HPLC Conditions]

Column : Proteonavi ; 2.0 mm i.d. x 150 mm
 Mobile phase : A) 0.1 vol% HCOOH / CH₃CN = 95 / 5
 B) 0.1 vol% HCOOH / CH₃CN = 20 / 80
 B 10 % (0.0 min) → 70 % (10.0 min) Gradient
 Flow rate : 200 $\mu\text{L}/\text{min}$
 Temperature : 40 °C
 Detection : MS (FTMS)
 Ionization : ESI Positive
 Inj. vol. : 2 μL
 Sample dissolved in : H₂O
 1 $\mu\text{g}/\text{mL}$ = 1 ppm