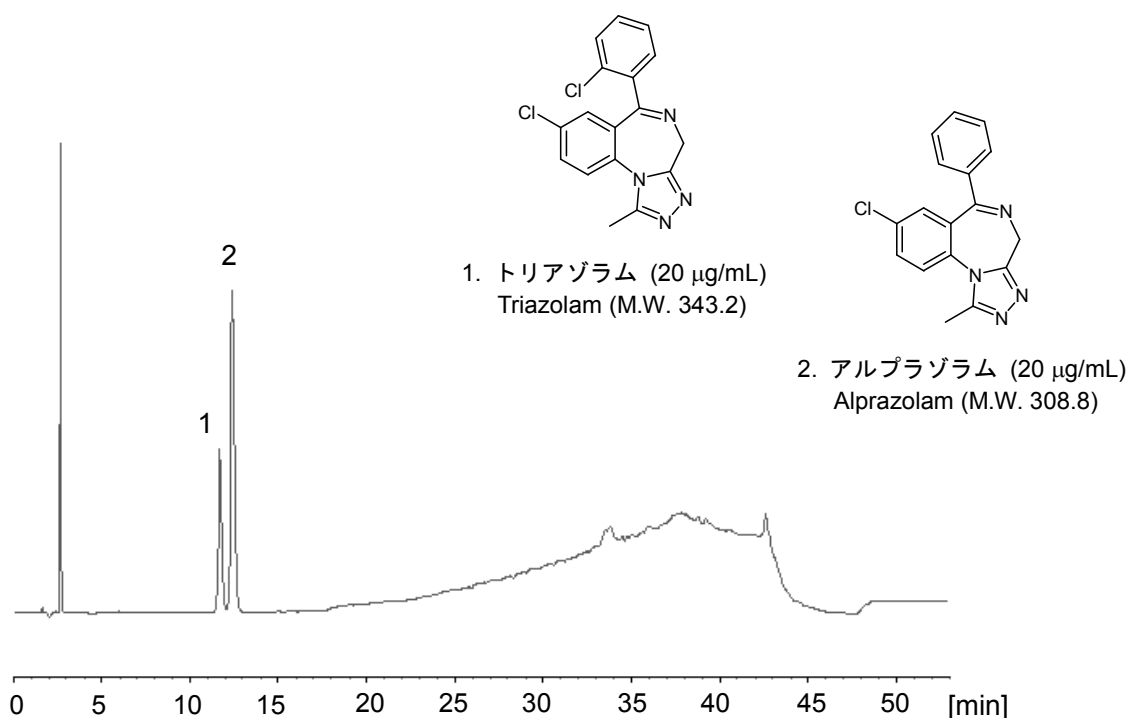


トリアゾラム、アルプラゾラムは、ベンゾジアゼピン系の睡眠導入剤です。CAPCELL PAK C₁₈ MGII S5 (4.6 mm i.d. x 250 mm) を用い、中国薬典の指定条件による分析例を示します。

Two of the benzodiazepine-type sleep inducing drugs, triazolam and alprazolam, were separated with CAPCELL PAK C₁₈ MGII S5 (4.6 mm i.d. x 250 mm) under the gradient conditions stated in the Chinese Pharmacopoeia.



【HPLC Conditions】

Column : CAPCELL PAK C₁₈ MGII S5 ; 4.6 mm i.d. x 250 mm
 Mobile phase : A) 100 mmol/L CH₃COONH₄ (adjusted at pH 4.2 with CH₃COOH) / CH₃OH = 44 / 56
 B) 100 mmol/L CH₃COONH₄ (adjusted at pH 4.2 with CH₃COOH) / CH₃OH = 5 / 95
 B 2 % (0 min) → 2 % (15 min) → 99 % (35 min) → 99 % (40 min) → 2 % (45 min) Gradient
 Flow rate : 1 mL/min
 Temperature : 35 °C
 Detection : UV 254 nm
 Inj. vol. : 10 μL
 Sample dissolved in : Both compounds were separately dissolved in dimethylformamide, and then, both solutions were added together, and diluted with mobile phase A.

※ 1μg/mL = 1 ppm