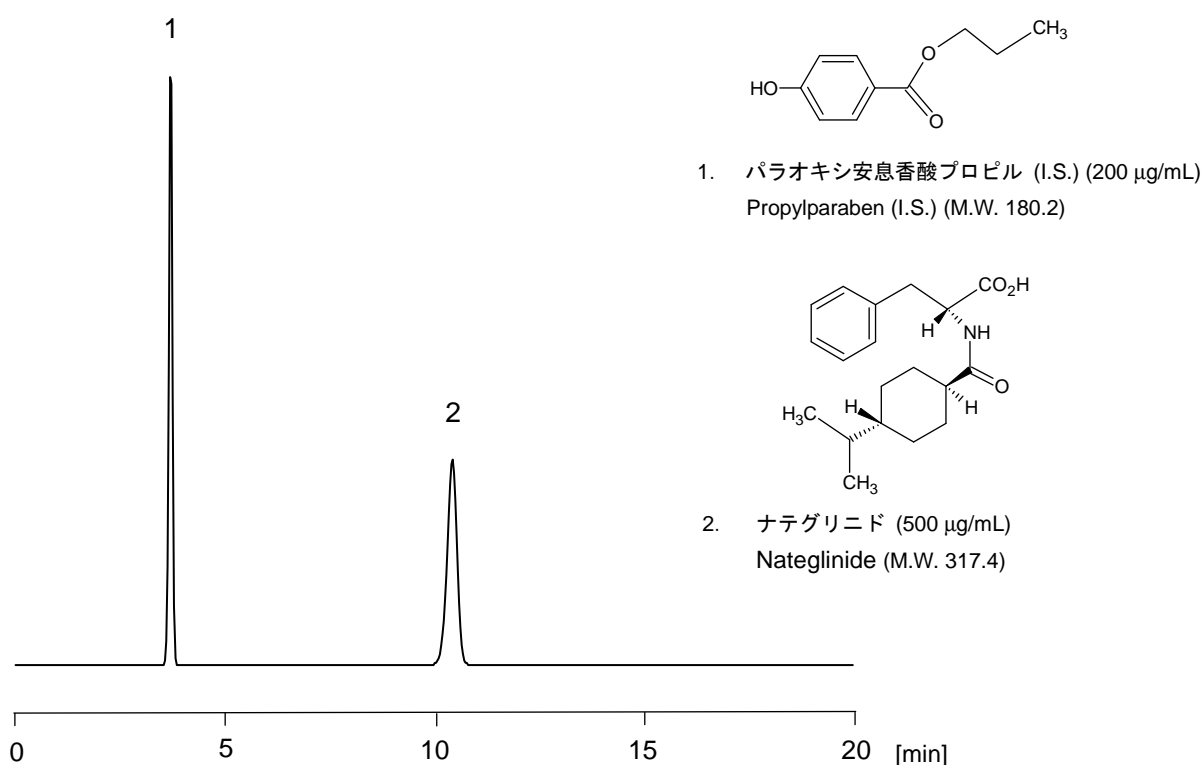


ナテグリニド

Nateglinide

ナテグリニドは、経口糖尿病薬として知られています。日本薬局方第十六改正に記載されている定量法に従い、CAPCELL PAK C₁₈ MGII S5 (4.6 mm i.d. x 150 mm) を用い測定しました。

Nateglinide, an oral antidiabetic drug, and its internal standard compound were separated with CAPCELL PAK C₁₈ MGII S5 (4.6 mm i.d. x 150 mm), according to the determination method described in the Japanese Pharmacopoeia, 16th Edition.



【HPLC Conditions】

Column : CAPCELL PAK C₁₈ MGII S5 ; 4.6 mm i.d. x 150 mm
Mobile phase : 50 mmol/L NaH₂PO₄ (pH 2.5, H₃PO₄) / CH₃CN = 55 / 45
Flow rate : 1.5 mL/min
Temperature : 40 °C
Detection : UV 210 nm
Inj. vol. : 10 µL
Sample dissolved in : 2 mL of the standard solution (2.5 mg/mL in CH₃CN) and 1 mL the internal standard solution (2 mg/mL in the mobile phase) were mixed together. The mixture was diluted to 10 mL with the mobile phase.

※1 µg/mL = 1 ppm