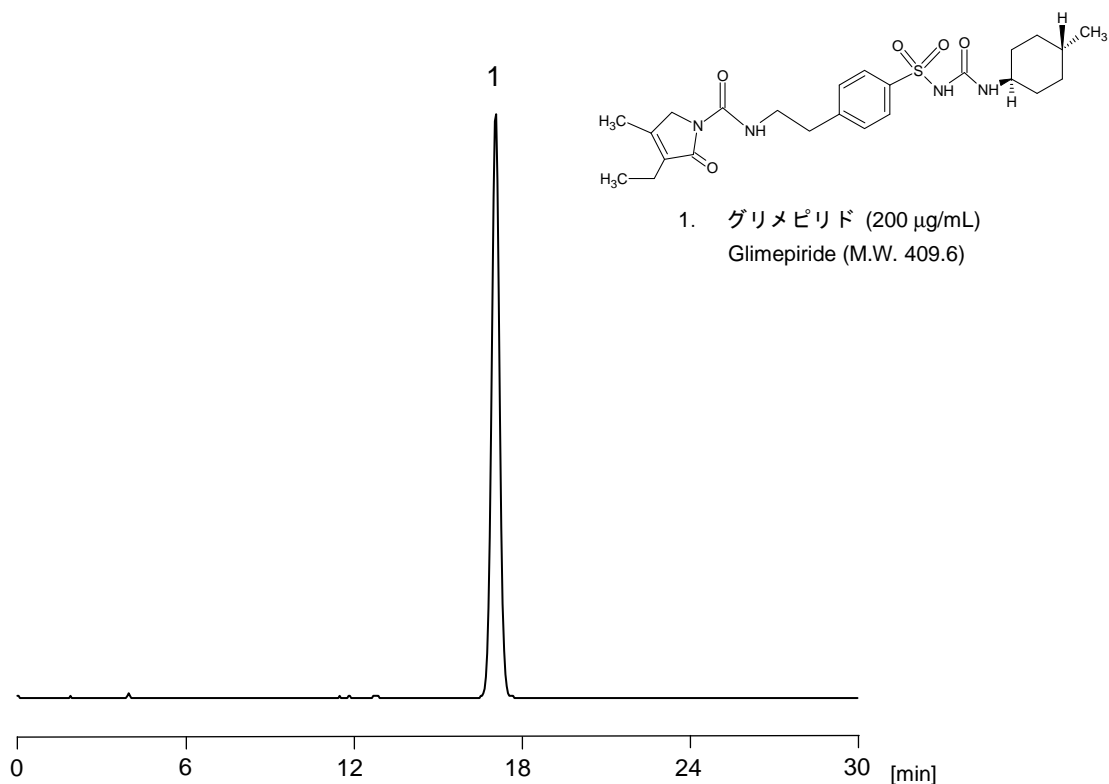


グリメピリド

Glimepiride

グリメピリドは糖尿病の治療に用いられます。日本薬局方第十六改正に記載されている純度試験の条件に従いクロマトグラムを取得しました。CAPCELL PAK C₁₈ MGII S5 (4.6 mm i.d. x 250 mm) を用いた例では局方の規定を全て十分に満たしています。

Glimepiride is used to treat diabetes. The following chromatogram was obtained according to its purity test described in the Japanese Pharmacopoeia, 16th Edition, by using CAPCELL PAK C₁₈ MGII S5 (4.6 mm i.d. x 250 mm). All the requirements concerning quality of separation were satisfied.



【HPLC Conditions】

Column	: CAPCELL PAK C ₁₈ MGII S5 ; 4.6 mm i.d. x 250 mm
Mobile phase	: Phosphate buffer (pH 2.5)* / CH ₃ CN = 1 / 1
Flow rate	: 1.25 mL/min
Temperature	: 25 °C
Detection	: UV 228 nm
Inj. vol.	: 10 µL
Sample dissolved in	: Mobile phase

* Dissolve 0.5 g of NaH₂PO₄ in 500 mL of water, and adjust pH at 2.5 with H₃PO₄.