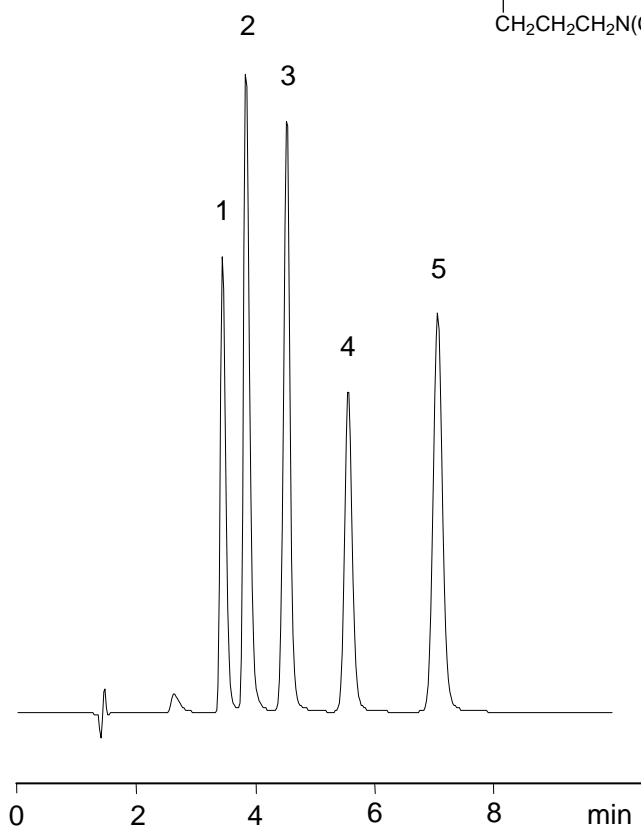
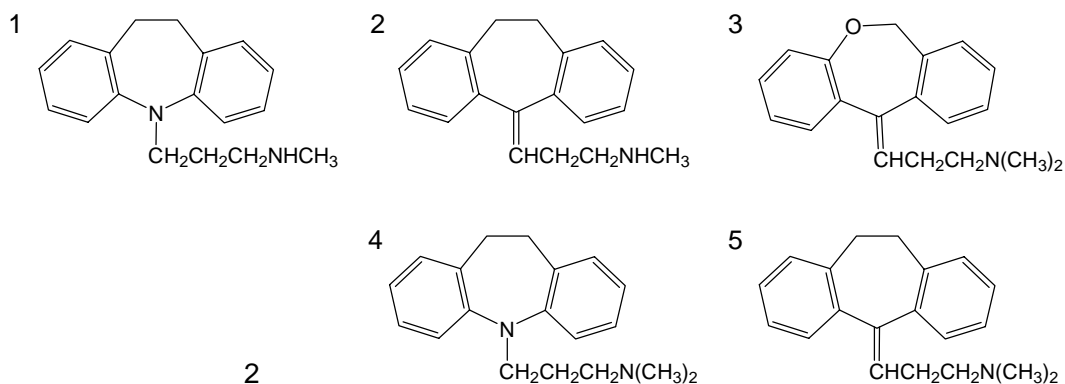


# 三環系抗うつ薬

# Tricyclic antidepressants



1. デシプラミン (50  $\mu\text{g/mL}$ )  
Desipramine (M.W. 266.4)
2. ノルトリプチリン (50  $\mu\text{g/mL}$ )  
Nortriptyline (M.W. 263.4)
3. ドキセピン (50  $\mu\text{g/mL}$ )  
Doxepin (M.W. 279.4)
4. イミプラミン (50  $\mu\text{g/mL}$ )  
Imipramine (M.W. 280.4)
5. アミトリプチリン (50  $\mu\text{g/mL}$ )  
Amitriptyline (M.W. 277.4)

## [HPLC Conditions]

Column : CAPCELL PAK C<sub>18</sub> MGII S5 ; 4.6 mm i.d. x 150 mm  
 Mobile phase : 10 mmol/L CH<sub>3</sub>COONH<sub>4</sub> / CH<sub>3</sub>OH = 30 / 70  
 Flow rate : 1 mL/min  
 Temperature : 40  
 Detection : UV 210 nm  
 Inj. vol. : 1  $\mu\text{L}$   
 Sample dissolved in : CH<sub>3</sub>OH  
 1  $\mu\text{g/mL}$  = 1 ppm