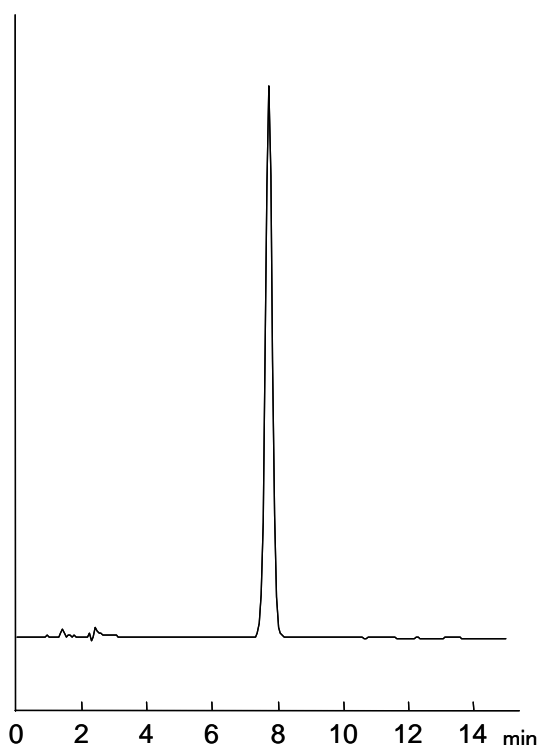


セフジニル

Cefdinir

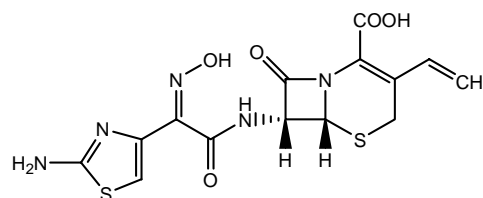
セフジニルの局方におけるカラムの選定条件は、理論段数及びシンメトリー係数はそれぞれ2000段以上、1.5以下と定められています。CAPCELL PAK C₁₈ MGII S5は理論段数6070、シンメトリー係数0.98で適合しています。

The Japanese Pharmacopoeia (15th ed.) requires a peak of cefdinir to show a number of theoretical plates of 2000 or greater and a symmetry factor of 1.5 or smaller. The chromatogram below shows 6070 and 0.98 for these parameters, respectively.



1.セフジニル (200 µg/mL)

Cefdinir (M.W. 395.4)



【HPLC Conditions】

- Column : CAPCELL PAK C₁₈ MGII S5 ; 4.6 mm i.d. x 150 mm
Mobile phase : 5 mL of tetramethylammonium hydroxide (10% aqueous solution) was diluted with 495 mL of water, and adjusted at pH 5.5 with phosphoric acid. 0.2 mL of EDTA-2Na (0.1 mol/L) was added to the solution. 450 mL of the solution, 30 mL of acetonitrile, and 20 mL of methanol were mixed together.
Flow rate : 0.9 mL/min
Temperature : 40 °C
Detection : UV 254 nm
Inj. vol. : 5 µL
Sample dissolved in : 100 mmol/L Phosphate buffer (KH₂PO₄:Na₂HPO₄ = 1:1 in molar ratio)
※ 1 µg/mL = 1 ppm