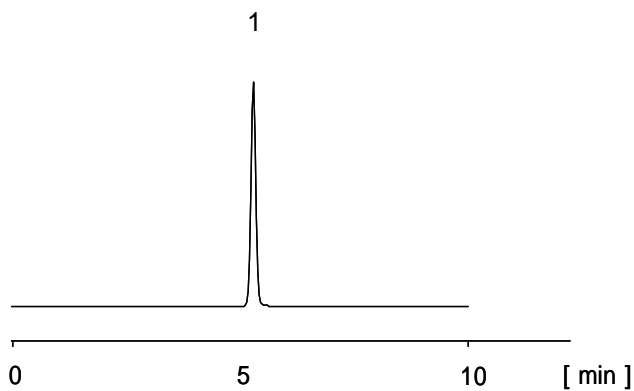
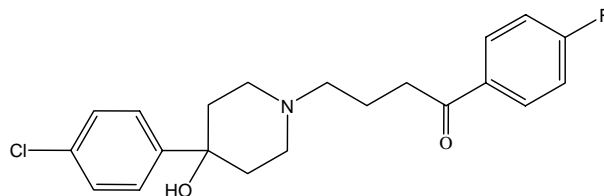


ハロペリドール

Haloperidol



1. ハロペリドール (25 $\mu\text{g/mL}$)
Haloperidol (M.W. 375.9)

[HPLC Conditions]

Column : CAPCELL PAK C₁₈ MGII S5 ; 4.6 mm i.d. x 150 mm
Mobile phase : 25 mmol/L Phosphate buffer (KH₂PO₄:Na₂HPO₄ = 1:1 in molar ratio) / CH₃CN = 40 / 60
Flow rate : 1 mL/min
Temperature : 40 °C
Detection : UV 230 nm
Inj. vol. : 5 μL
Sample dissolved in : Mobile phase
1 $\mu\text{g/mL}$ = 1 ppm