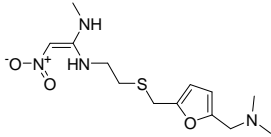


- |  |  |   |
|--|--|---|
| 1. ラニチジン (100 µg/mL)<br>Ranitidine (M.W. 314.4)  | 6. リドカイン (100 µg/mL)<br>Lidocaine (M.W. 234.3)           | 12. プロメタジン (100 µg/mL)<br>Promethazine (M.W. 284.4)     |
| 2. スコポラミン (100 µg/mL)<br>Scopamine (M.W. 303.4)  | 7. キニーネ (100 µg/mL)<br>Quinine (M.W. 310.4)              | 13. ジフェニドール (100 µg/mL)<br>Diphenidol (M.W. 309.5)      |
| 3. プロカイン (100 µg/mL)<br>Procaine (M.W. 236.3)    | 8. ジフェンヒドラミン (500 µg/mL)<br>Diphenhydramine (M.W. 255.4) | 14. イミプラミン (100 µg/mL)<br>Imipramine (M.W. 280.4)       |
| 4. ニフェジピン (100 µg/mL)<br>Nifedipine (M.W. 374.4) | 9. ベラパミル (100 µg/mL)<br>Verapamil (M.W. 454.6)           | 15. アミトリプチリン (100 µg/mL)<br>Amitriptyline (M.W. 277.4)  |
| 5. ヨヒンビン (100 µg/mL)<br>Yohimbine (M.W. 354.4)   | 10. ニカルジピン (100 µg/mL)<br>Nicardipine (M.W. 479.5)       | 16. クロルプロマジン (100 µg/mL)<br>Chlorpromazine (M.W. 318.9) |
|  | 11. ジブカイン (100 µg/mL)<br>Dibucaine (M.W. 343.5)          | 17. クロムイπραミン (100 µg/mL)<br>Clomipramine (M.W. 314.9)  |

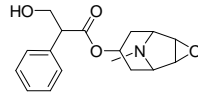
## 【HPLC Conditions】

- Column : CAPCELL PAK C<sub>18</sub> MGII S5 ; 4.6 mm i.d. x 250 mm
- Mobile phase : 20 mmol/L Phosphate buffer (9.8 mmol/L KH<sub>2</sub>PO<sub>4</sub>, 10.2 mmol/L K<sub>2</sub>HPO<sub>4</sub>) / CH<sub>3</sub>OH = 25 / 75
- Flow rate : 1 mL/min
- Temperature : 40 °C
- Detection : UV 220 nm
- Inj. vol. : 5 µL
- Sample dissolved in : Standard compounds were dissolved in methanol at concentrations 50-fold the final ones, and diluted with the mobile phase. The final concentration was 100 µg/mL each compound, except for diphenhydramine (500 µg/mL). Compound 1 (C1), C5, C8-C13 were weighed as their hydrochloride, and C7 was weighed as its sulfate dehydrate.

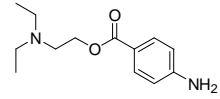
※ 1 µg/mL = 1 ppm



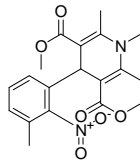
1. Ranitidine



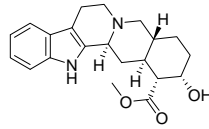
2. Scopolamine



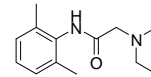
3. Procaine



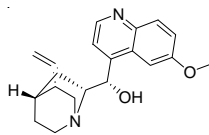
4. Nifedipine



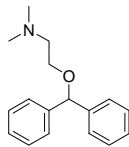
5. Yohimbine



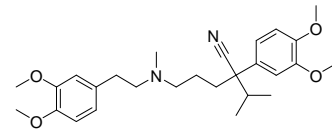
6. Lidocaine



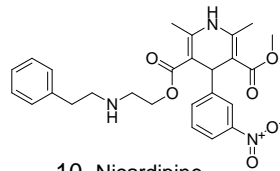
7. Quinine



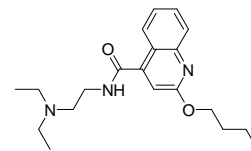
8. Diphenhydramine



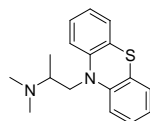
9. Verapamil



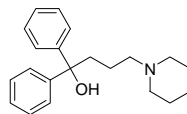
10. Nicardipine



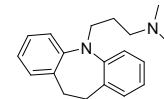
11. Dibucaine



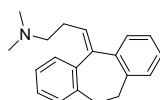
12. Promethazine



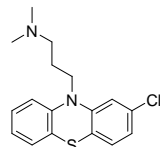
13. Diphenidol



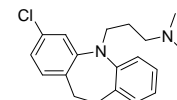
14. Imipramine



15. Amitriptyline



16. Chlorpromazine



17. Clomipramine