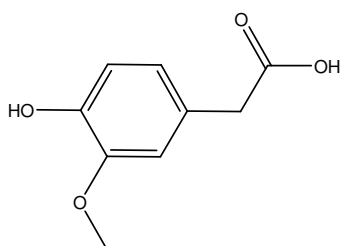
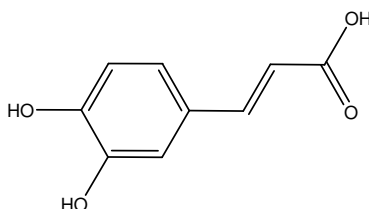


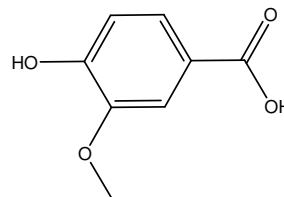
お酒に含まれるバニリン酸、バニリン及びフェルラ酸の 3 成分と、類似構造のホモバニリン酸及びカフェ酸を加えた 5 種類のフェノール化合物について、CAPCELL PAK ADME S3 (2.1 mm i.d. x 150 mm) を用いた測定例を示します。



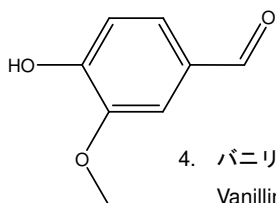
1. ホモバニリン酸 (150 µg/mL)  
Homovanillic acid (M.W. 182.2)



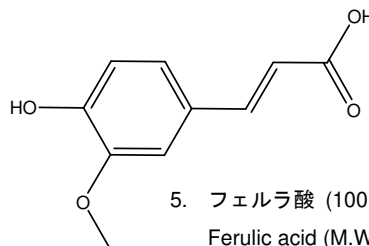
2. カフェ酸 (50 µg/mL)  
Caffeic acid (M.W. 180.2)



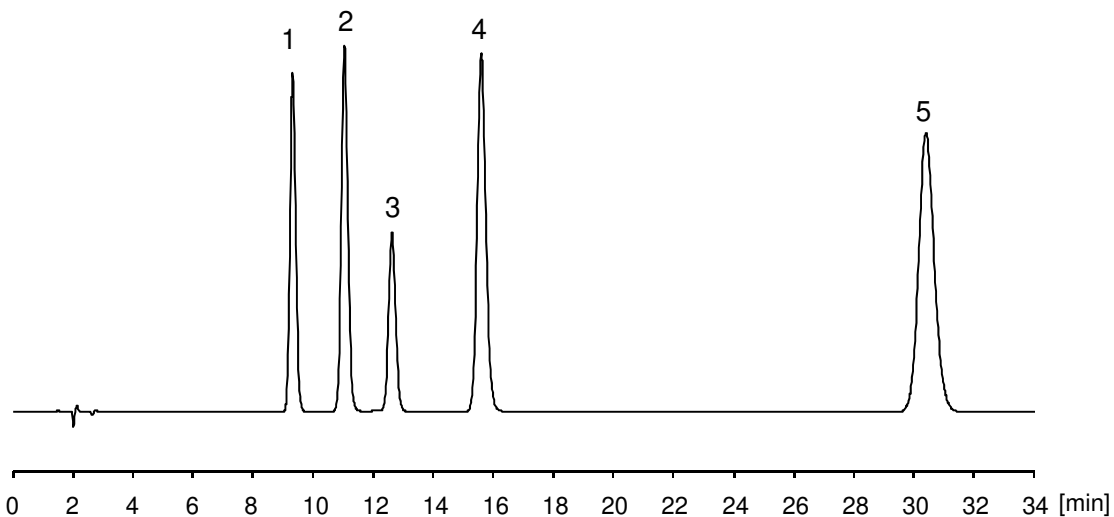
3. バニリン酸 (50 µg/mL)  
Vanillic acid (M.W. 168.2)



4. バニリン (50 µg/mL)  
Vanillin (M.W. 152.2)



5. フェルラ酸 (100 µg/mL)  
Ferulic acid (M.W. 194.2)



#### 【HPLC Conditions】

|                     |  |
|---------------------|--|
| Column              | : CAPCELL PAK ADME S3 ; 2.1 mm i.d. x 150 mm   |
| Mobile phase        | : 0.1 vol% HCOOH, H <sub>2</sub> O / CH <sub>3</sub> OH = 75 / 25  |
| Flow rate           | : 200 µL/min   |
| Temperature         | : 40 °C  |
| Detection           | : PDA 280 nm   |
| Inj. vol.           | : 1 µL   |
| Sample dissolved in | : The standard compounds were dissolved in 50 vol% CH <sub>3</sub> CN at 1 mg/mL, and then, diluted with 10 vol% CH <sub>3</sub> CN. |