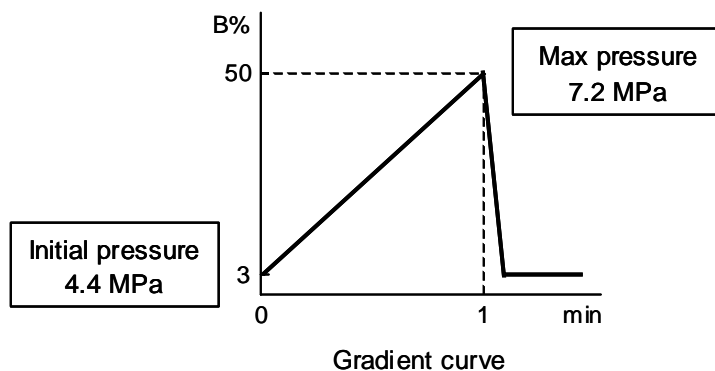
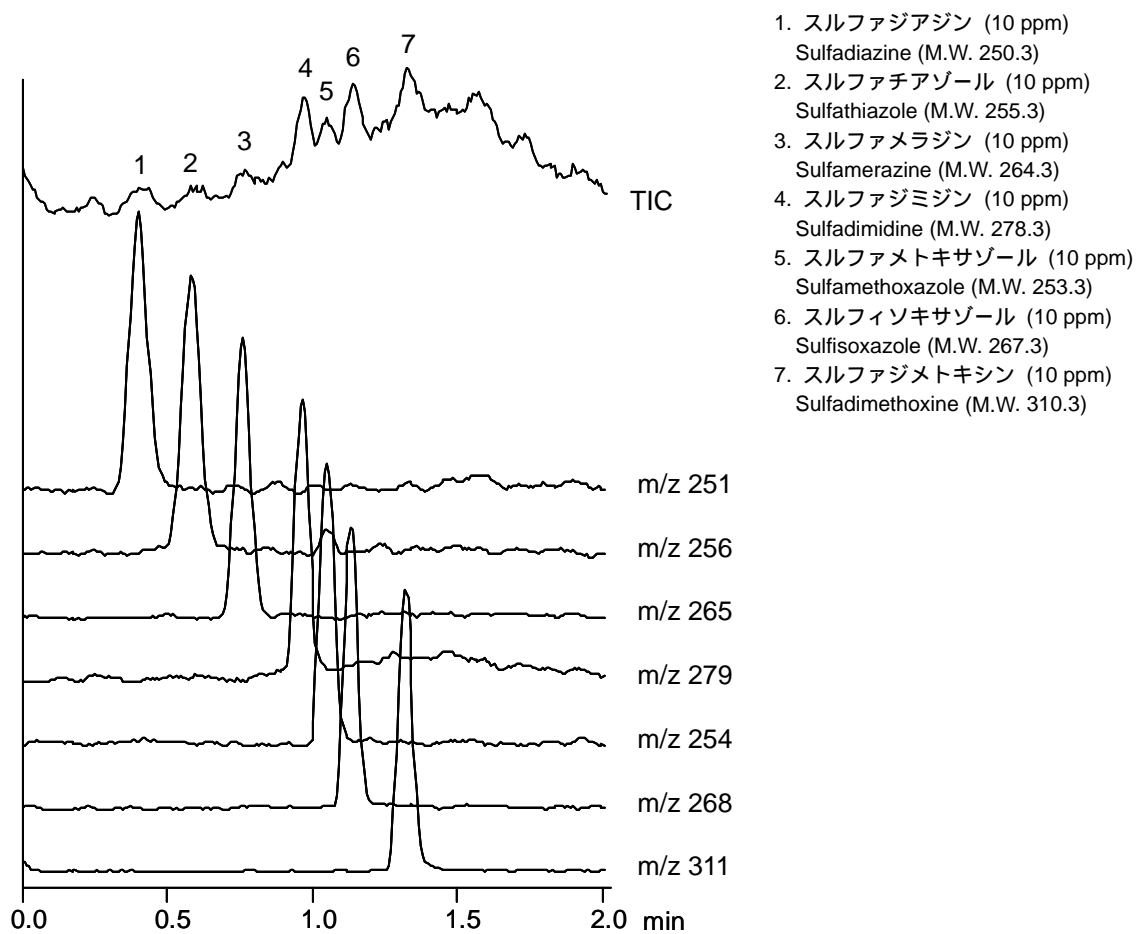


サルファ剤

Sulfonamides

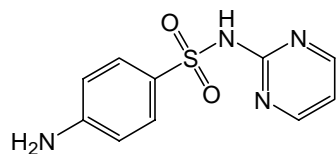
著しく短いセミマイクロカラムを使用することで、低圧下で高速分析をすることが可能となります。

An extremely short semi-microcolumn makes it possible to run a rapid analysis under a low pressure.

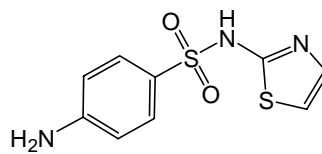


【HPLC Conditions】

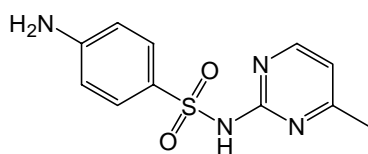
Column : CAPCELL PAK C₁₈ MGII S3 ; 1.5 mm i.d. x 10 mm
Mobile phase : A) 0.1 vol% HCOOH, B) 0.1 vol% HCOOH in CH₃OH
B 3% (0.0 min) -> 50% (1.0 min) -> 3% (1.1 min) Gradient
Flow rate : 400 μL/min
Temperature : 40 °C
Detection : MS ESI Positive
Inj. vol. : 1 μL
Sample dissolved in : All compounds were dissolved in methanol at 100 ppm, and the solution was diluted to 10 ppm with the water.
※ 1 μg/mL = 1 ppm



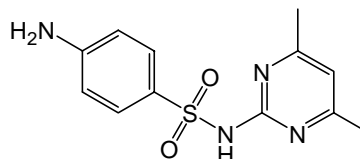
1. Sulfadiazine



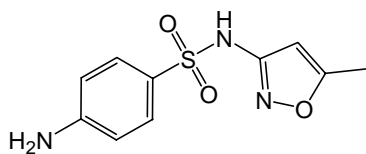
2. Sulfathiazole



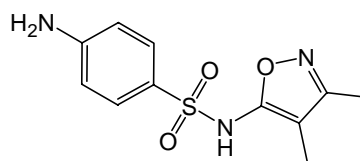
3. Sulfamerazine



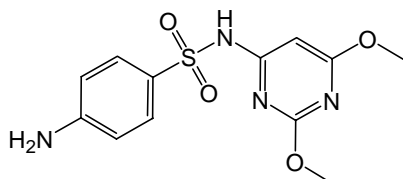
4. Sulfadimidine



5. Sulfamethoxazole



6. Sulfisoxazole



7. Sulfadimethoxine