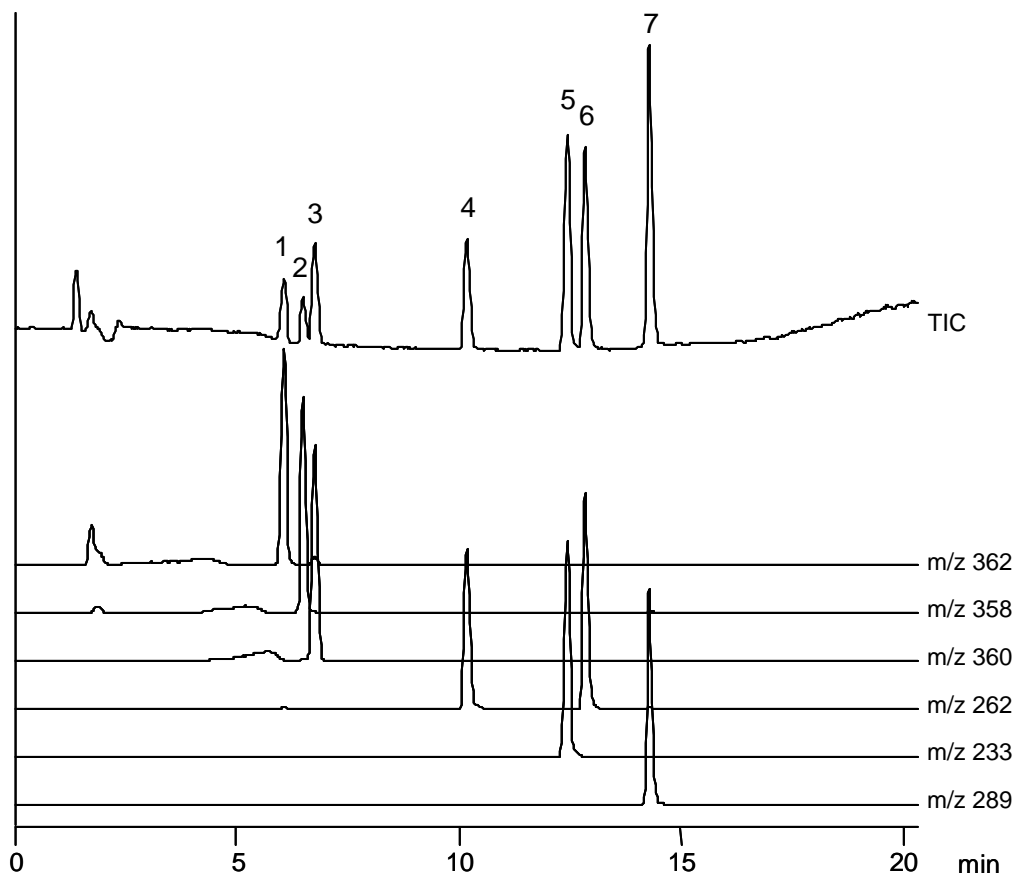


1. オフロキサシン (10 ppm)
Ofloxacin (M.W. 361.4)
2. ダノフロキサシン (10 ppm)
Danofloxacin (M.W. 357.4)
3. エンロフロキサシン (10 ppm)
Enrofloxacin (M.W. 359.4)
4. オキシリン酸 (10 ppm)
Oxolinic acid (M.W. 261.2)
5. ナリジクス酸 (10 ppm)
Nalidixic acid (M.W. 232.2)
6. フルメキン (10 ppm)
Flumequine (M.W. 261.3)
7. ピロミド酸 (10 ppm)
Piromidic acid (M.W. 288.3)



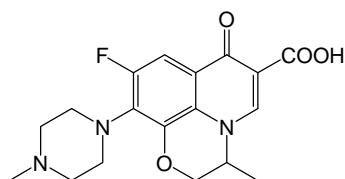
【HPLC Conditions】

Column : CAPCELL PAK C₁₈ MGII S5 ; 2.0 mm i.d. x 150 mm
Mobile phase : A) H₂O / CH₃COOH = 100 / 0.3
B) CH₃CN / CH₃COOH = 100 / 0.3
B 10 % (0.0 min) -> 80 % (20.0 min) -> 80 % (25.0 min) ->
10 % (25.1 min) Gradient
Flow rate : 200 μL/min
Temperature : 40 °C
Detection : MS ESI Positive
Inj. vol. : 5 μL
Sample dissolved in : 0.1 mol/L NaOH / CH₃OH = 4 / 96 (10 ppm)

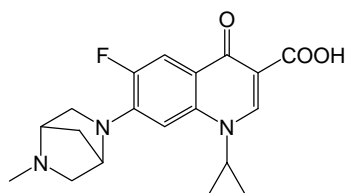
【Food analysis mixed standard solution 2 , 7 compounds for
LC-MS (食品分析用混合標準液 2 キノロン剤 LC 対象 7 種)】

関東化学株式会社

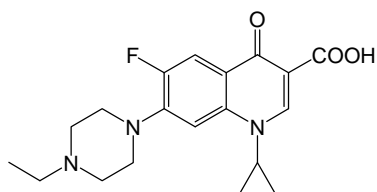
※ 1 μg/mL = 1 ppm



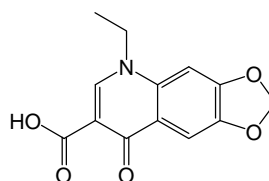
1. Ofloxacin



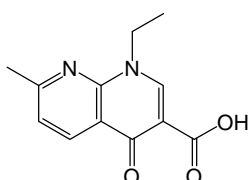
2. Danofloxacin



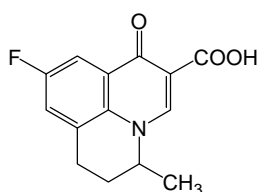
3. Enrofloxacin



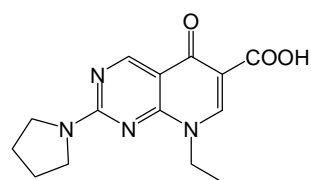
4. Oxolinic acid



5. Nalidixic acid



6. Flumequine



7. Piromidic acid