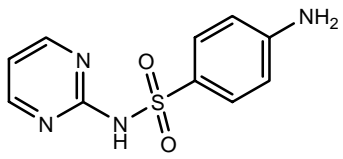


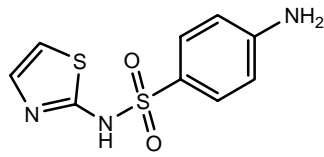
1. スルファジアジン (310 ppb)  
Sulfadiazine (M.W. 250.3)
2. スルファチアゾール (310 ppb)  
Sulfathiazol (M.W. 255.3)
3. スルファメラジン (620 ppb)  
Sulfamerazine (M.W. 264.3)
4. スルファメトキシピリダジン (310 ppb)  
Sulfamethoxypyridazine (M.W. 280.3)
5. スルファジミジン (620 ppb)  
Sulfadimidine (M.W. 278.3)
6. スルファモノメトキシ (920 ppb)  
Sulfamonomethoxine (M.W. 280.3)
7. スルファメトキサゾール (310 ppb)  
Sulfamethoxazole (M.W. 253.3)
8. ピリメタミン (770 ppb)  
Pyrimethamine (M.W. 248.7)
9. オキシリン酸 (310 ppb)  
Oxolic acid (M.W. 261.2)
10. クロラムフェニコール (1.54 ppm)  
Chloramphenicol (M.W. 323.1)
11. スルファキノキサリン (920 ppb)  
Sulfaquinoxaline (M.W. 300.3)
12. スルファジメトキシ (920 ppb)  
Sufadimethoxine (M.W. 310.3)

## 【HPLC Conditions】

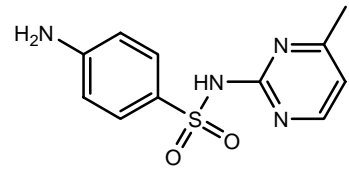
Column : CAPCELL PAK C<sub>18</sub> MGII S5 ; 4.6 mm i.d. x 150 mm  
 Mobile phase : A) 25 mmol/L KH<sub>2</sub>PO<sub>4</sub> / CH<sub>3</sub>CN = 85 / 15  
 B) 25 mmol/L KH<sub>2</sub>PO<sub>4</sub> / CH<sub>3</sub>CN = 30 / 70  
 B 0% (0.0 min) -> 40% (20.0 min) -> 100% (28.0 min) -> 100% (35.0 min) -> 0% (35.1 min) -> 0% (40.0 min) Gradient  
 Flow rate : 600 μL/min  
 Temperature : 40 °C  
 Detection : PDA 265 nm  
 Inj. vol. : 5 μL  
 Sample dissolved in : 60 vol% CH<sub>3</sub>CN  
 ※ 1 μg/mL = 1 ppm



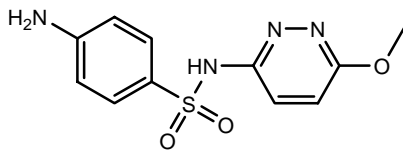
1. Sulfadiazine



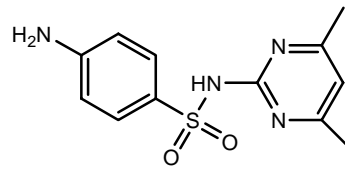
2. Sulfathiazol



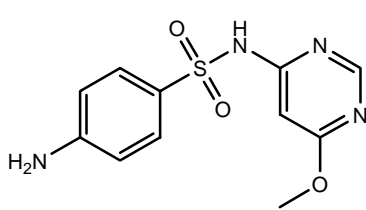
3. Sulfamerazine



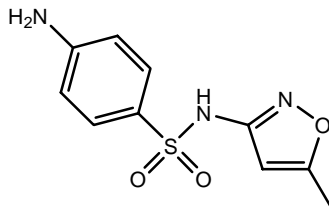
4. Sulfamethoxyipyridazine



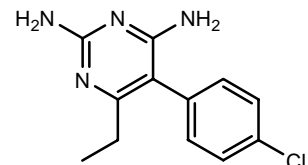
5. Sulfadimidine



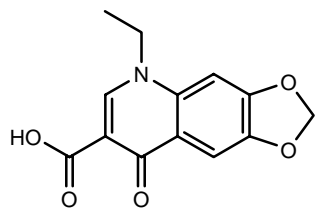
6. Sulfamonomethoxine



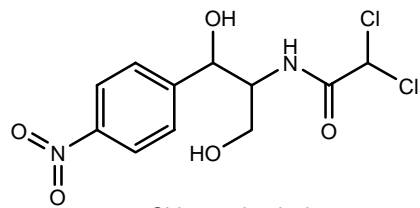
7. Sulfamethoxazole



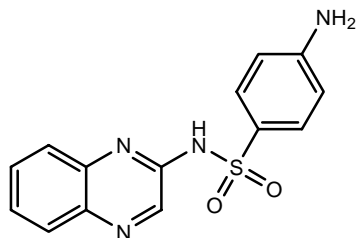
8. Pyrimethamine



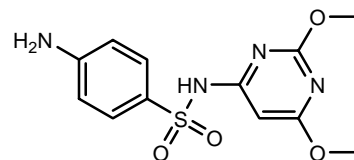
9. Oxolic acid



10. Chloramphenicol



11. Sulfadoxine



12. Sulfamethoxine