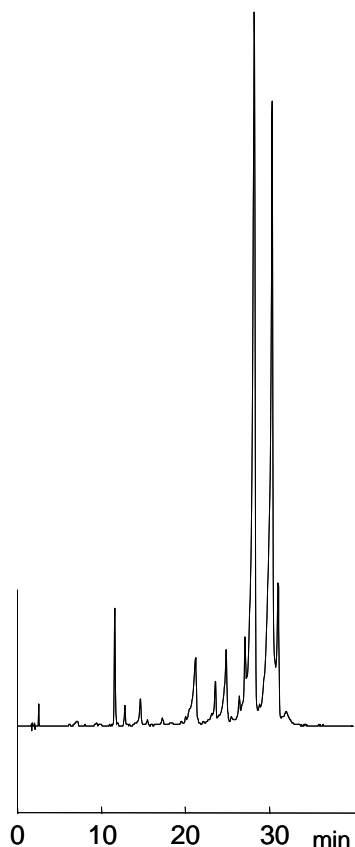


キタマイシン

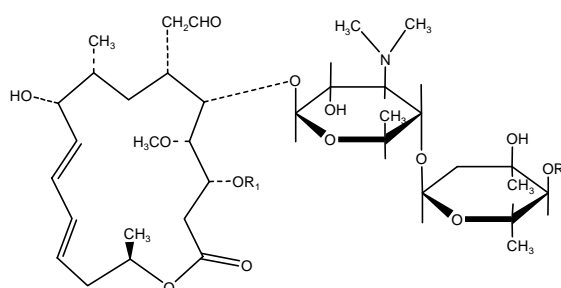
Kitasamycin



キタマイシン (400 ppm)

Kitasamycin (M.W. 757.9, 771.9, 780.8, 814.0, 828.0, 907.6)

(syn. Leucomycin)



Leucomycin A₁ : R₁ = H, R₂ = COCH₂CH(CH₃)₂
 Leucomycin A₃ : R₁ = COCH₃, R₂ = COCH₂CH(CH₃)₂
 Leucomycin A₄ : R₁ = COCH₃, R₂ = COCH₂CH₂CH₃
 Leucomycin A₅ : R₁ = H, R₂ = COCH₂CH₂CH₃
 Leucomycin A₆ : R₁ = COCH₃, R₂ = COCH₂CH₃
 Leucomycin A₇ : R₁ = H, R₂ = COCH₂CH₃

【HPLC Conditions】

- Column : CAPCELL PAK C₈ DD S5 ; 4.6 mm i.d. x 150 mm
- Mobile phase : A) 1 mol/L Phosphate buffer (KH₂PO₄ : K₂HPO₄ = 1 : 1 in molar ratio) / H₂O / CH₃CN = 12.5 / 687.5 / 150
 B) 1 mol/L Phosphate buffer (KH₂PO₄ : K₂HPO₄ = 1 : 1 in molar ratio) / H₂O / CH₃CN = 12.5 / 237.5 / 600
 B 20% (0.0 min) -> 80% (30.0 min) -> 20% (31.0 min) -> 20% (41.0 min) Gradient
- Flow rate : 1 mL/min
- Temperature : 50 °C
- Detection : UV 231 nm
- Inj. vol. : 5 μL
- Sample dissolved in : Kitasamycin (4.0 mg) was dissolved in methanol (2.5 μL), and then, mobile phase A (7.5 μL) was added to the solution.
 1 μg/mL = 1 ppm