

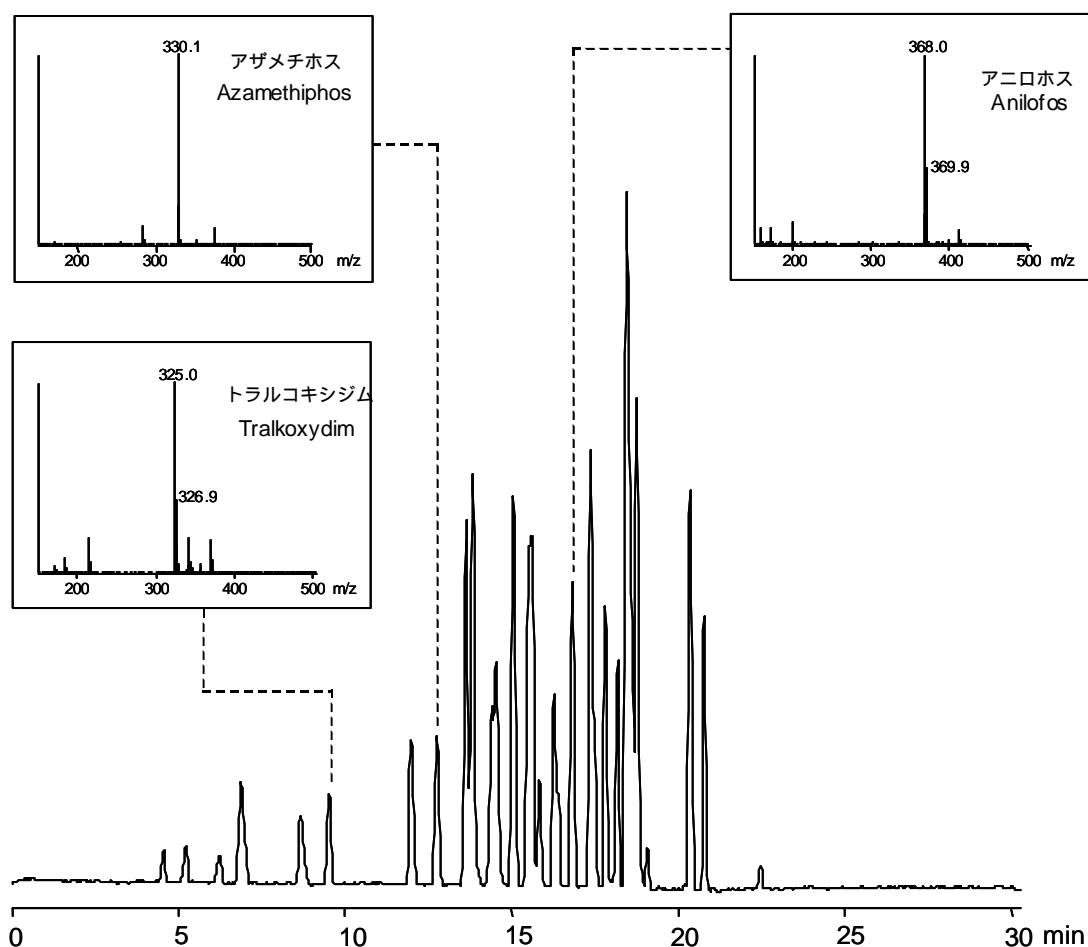
LC-MS による農薬等の一斉試験法 I

Pesticide residue monitoring by LC-MS,

“Method I” by Ministry of Health, Labor, and Welfare (MHLW)

厚生労働省の定める残留農薬分析法(I法)に従い、LC-MS による農薬混合標準液の一斉分析を行いました。トータルイオンクロマトグラム及びスペクトル例を下に示します。

According to Method I of MHLW, a standard pesticide mixture was run in LC-MS. The total ion chromatogram and a few examples of spectra are shown below.



【HPLC Conditions】

Column : CAPCELL PAK C₁₈ UG120 S3 ; 2.0 mm i.d. x 150 mm
Mobile phase : A) 5 mmol/L CH₃COONH₄ in H₂O
B) 5 mmol/L CH₃COONH₄ in CH₃CN
B 15% (0min) 40% (1min) 40% (3.5min) 50%
(6min) 55% (8min) 95% (17.5min) 95% (30min)
15% (30min) Gradient
Flow rate : 200 μL/min
Temperature : 40 °C
Detection : MS ESI Positive
Inj. vol. : 5 μL
Sample dissolved in : CH₃OH (10 ppm)
{Pesticide Standard Mixture 44 for Positive List (for LC-MS, 37
compounds), Kanto Kagaku, Tokyo, Japan}
(農薬混合標準液 44 ポジティブリスト制度 LC-MS 対象 37 種
関東化学株式会社)
※ 1 μg/mL = 1 ppm