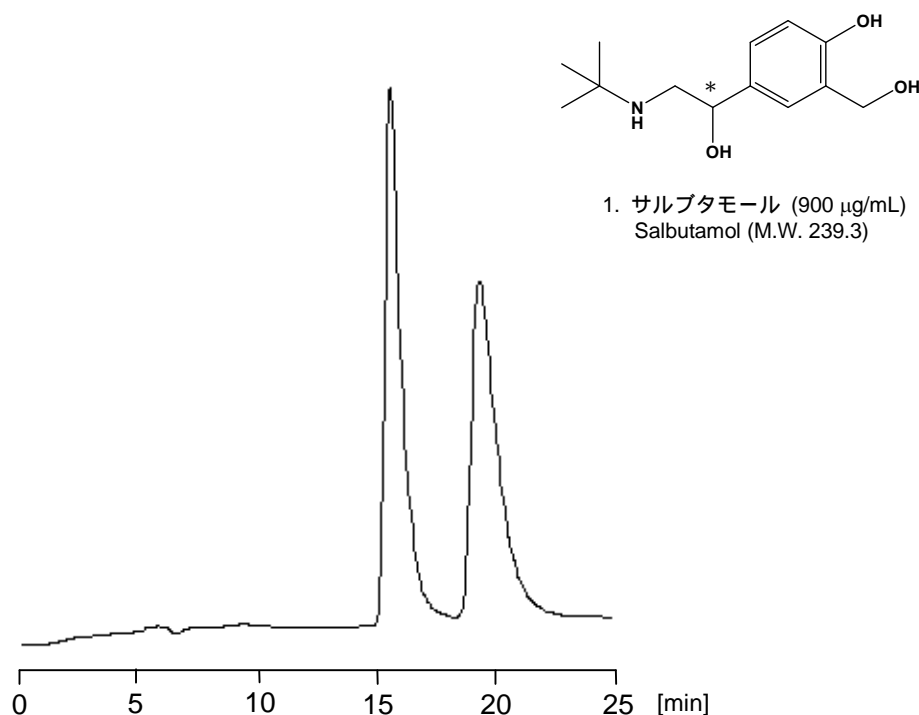


サルブタモール

Salbutamol

サルブタモール（別名，アルブテロール）は喘息や慢性閉塞性肺疾患の治療薬として使われています．Chiral CD-Ph（4.6 mm i.d. x 250 mm）を用いた光学異性体の分析例を示します．

Salbutamol, also known as albuterol, is used to treat asthma and chronic obstructive pulmonary disease. The following chromatogram of optical isomers was obtained with Chiral CD-Ph (4.6 mm i.d. x 250 mm).



【HPLC Conditions】

Column	: Chiral CD-Ph ; 4.6 mm i.d. x 250 mm
Mobile phase	: 100 mmol/L NaClO_4 / CH_3OH = 60 / 40
Flow rate	: 500 $\mu\text{L}/\text{min}$
Temperature	: 35 $^\circ\text{C}$
Detection	: UV 274 nm
Inj. vol.	: 2 μL
Sample dissolved in	: CH_3OH
	1 $\mu\text{g/mL}$ = 1 ppm