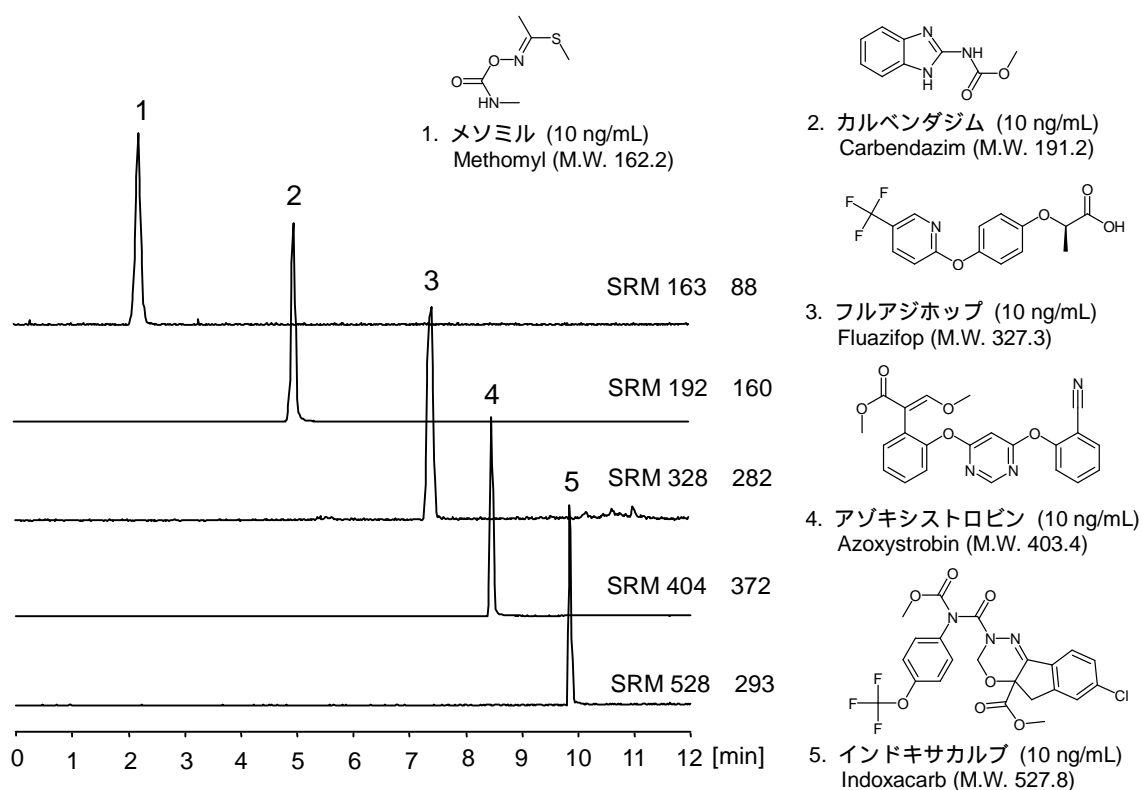


LC-MS においてキャリーオーバーしやすい農薬 5 種類を CAPCELL CORE C₁₈ S2.7 (2.1 mm i.d. x 50 mm) を用い分析した例を示します。LC には対キャリーオーバー性能に優れた NASCA2 を用いました。

Five pesticides known to easily cause carryover were analyzed with LC-MS using CAPCELL CORE C₁₈ S2.7 (2.1 mm i.d. x 50 mm). NASCA2, an LC possessing an excellent anti-carryover performance, was used here.



【HPLC Conditions】

Column : CAPCELL CORE C₁₈ S2.7 ; 2.1 mm i.d. x 50 mm
 Mobile phase : A) 2 mmol/L CH₃COONH₄, B) CH₃OH
 B 5 % (0 min) 5 % (2 min) 95 % (10 min)
 5 % (10.1 min) Gradient

Flow rate : 300 μL/min
 Temperature : 50 °C
 Detection : MS/MS (SRM)
 Ionization : ESI positive
 Inj. vol. : 2 μL
 Sample dissolved in : Each standard was separately dissolved in CH₃OH at 1 mg/mL.
 Equal amount of all the solutions were mixed together, and diluted with Mobile phase A to 10 ng/mL.
 1 μg/mL = 1 ppm