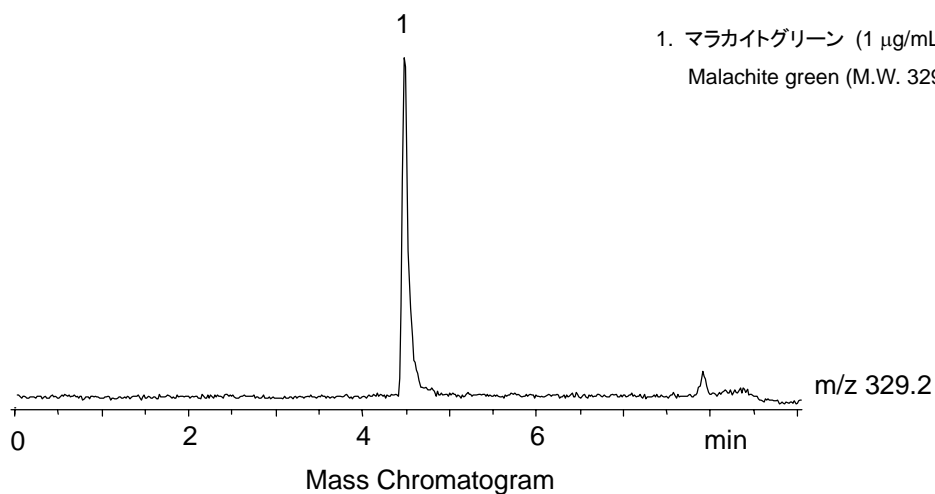


1. マラカイトグリーン (1 $\mu\text{g/mL}$)
Malachite green (M.W. 329.2)

**【HPLC Conditions】**

Column : CAPCELL PAK C₁₈ MGIII S5 ; 2.0 mm i.d. x 150 mm
Mobile phase : A) 5 mmol/L HCOONH₄, 0.1 vol% HCOOH B) CH₃CN
B 10 % (0.0 min) -> 90 % (6.0 min) -> 90 % (10.0 min) -> 10 %
(10.1 min) -> 10 % (15.0 min)
Flow rate : 200 $\mu\text{L/min}$
Temperature : 40 °C
Detection : MS ESI Positive
Inj. vol. : 1 μL
Sample dissolved in : CH₃CN (1 $\mu\text{g/mL}$)
※ 1 $\mu\text{g/mL}$ = 1 ppm