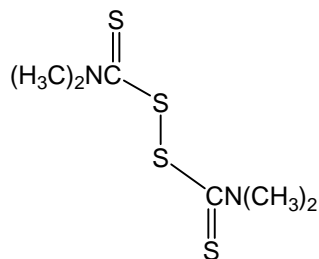


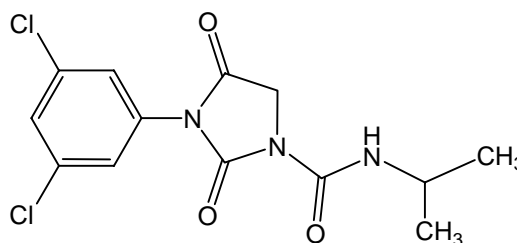
1. チウラム (100 µg/mL)

Thiuram (M.W. 240.4)



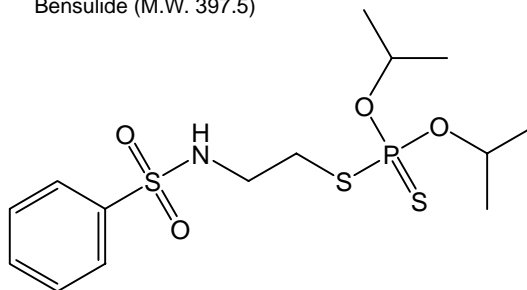
2. イプロジオン (100 µg/mL)

Iprodione (M.W. 330.2)



3. ベンスリド (100 µg/mL)

Bensulide (M.W. 397.5)



【HPLC Conditions】

- Column : CAPCELL PAK C₁₈ MGII S5 ; 2.0 mm i.d. x 150 mm
 Mobile phase : H₂O / CH₃OH = 45 / 55
 Flow rate : 200 µL/min
 Temperature : 40 °C
 Detection : UV 230 nm
 Inj. vol. : 2 µL
 Sample dissolved in : Each compound was separately dissolved in methanol at 1 mg/mL. 100 µL of each solution was added together. The mobile phase was added to the mixture to make the total volume 1mL.
 ※ 1 µg/mL = 1 ppm