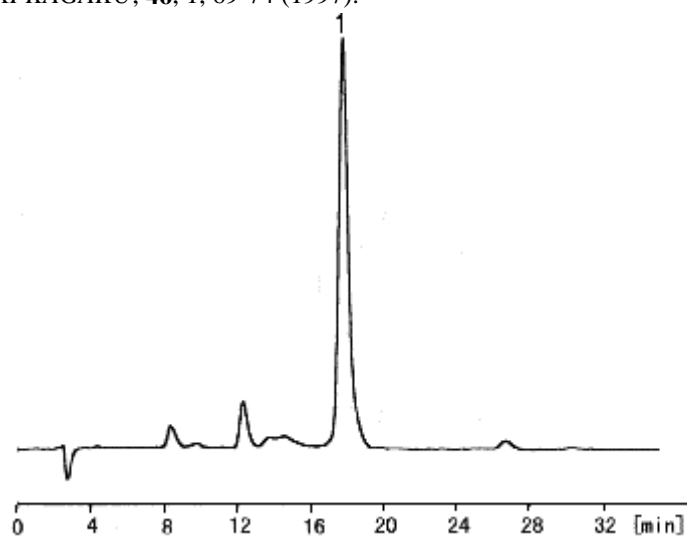


Reference: *BUNSEKI KAGAKU*, **46**, 1, 69-74 (1997).



1 DL-Homoalanine-4-yl(methyl)phosphinic acid

0.5 ppm

HPLC Conditions

Column	CAPCELL PAK C ₁₈ UG120 S5 : 1.5 mm i.d.×150 mm
Mobile phase	10mmol/L Phosphate buffer (pH2.5) / CH ₃ CN = 70 / 30
Flow rate	100 μL/min
Temperature	40 °C
Detect	FL Ex. 250 nm, Em. 320 nm
Inj. vol.	5 μL