

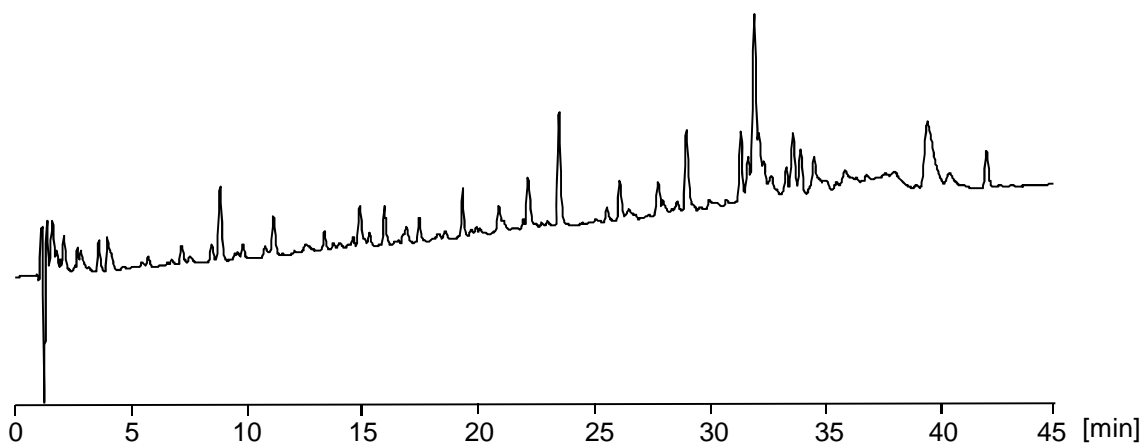
## カゼイン(トリプシン消化物)

## Tryptic digest of casein

カゼインをトリプシンで酵素分解し得られたペプチドを, CAPCELL CORE ADME S2.7 (2.1 mm i.d. x 100 mm) を用いて分析した例を示します.

Peptides derived from tryptic digest of casein were analyzed with CAPCELL CORE ADME S2.7 (2.1 mm i.d. x 100 mm), a high-polar column introduced by a novel Adamantyl function group.

1. カゼイン (5 mg/mL, as intact protein)  
Casein



### 【HPLC Conditions】

Column : CAPCELL CORE ADME S2.7 ; 2.1 mm i.d. x 100 mm  
Mobile phase : A) 0.1 vol% TFA, H<sub>2</sub>O B) 0.1 vol% TFA, CH<sub>3</sub>CN  
B 10 % (0 min) -> 50 % (45 min) -> 10 % (45.1 min) Gradient  
Flow rate : 200  $\mu$ L/min  
Temperature : 35 °C  
Detection : PDA 210 nm  
Inj.vol. : 1  $\mu$ L  
Sample dissolved in : Reaction buffer  
※ 1  $\mu$ g/mL = 1 ppm