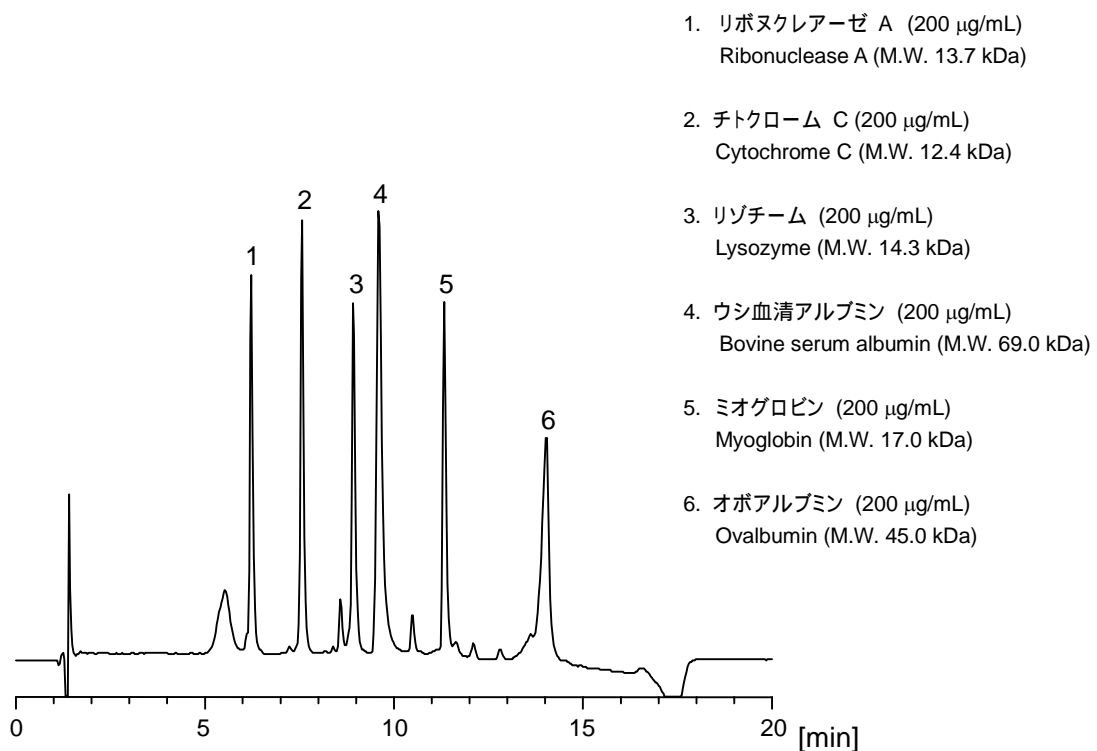


タンパク質やペプチドの分析用に開発された Proteonavi (2.0 mm i.d. x 150 mm) を用い、標準的なタンパク質を分離した例を紹介します。

The chromatogram below was the separation of six common proteins obtained with Proteonavi (2.0 mm i.d. x 150 mm), or a column especially designed for separation of proteins and peptides.

**【HPLC Conditions】**

Column : Proteonavi ; 2.0 mm i.d. x 150 mm
Mobile phase : A) 0.1 vol% TFA, B) 0.1 vol% TFA, CH₃CN
B 20 % (0 min) 70 % (15 min) 20 % (15.1 min) Gradient
Flow rate : 200 µL/min
Temperature : 40 °C
Detection : UV 220 nm
Inj. vol. : 2 µL
Sample dissolved in : Each standard was dissolved at 2 mg/mL in H₂O. 100 µL of all the solutions were added together, and diluted to 1 mL with H₂O.
1 µg/mL = 1 ppm