

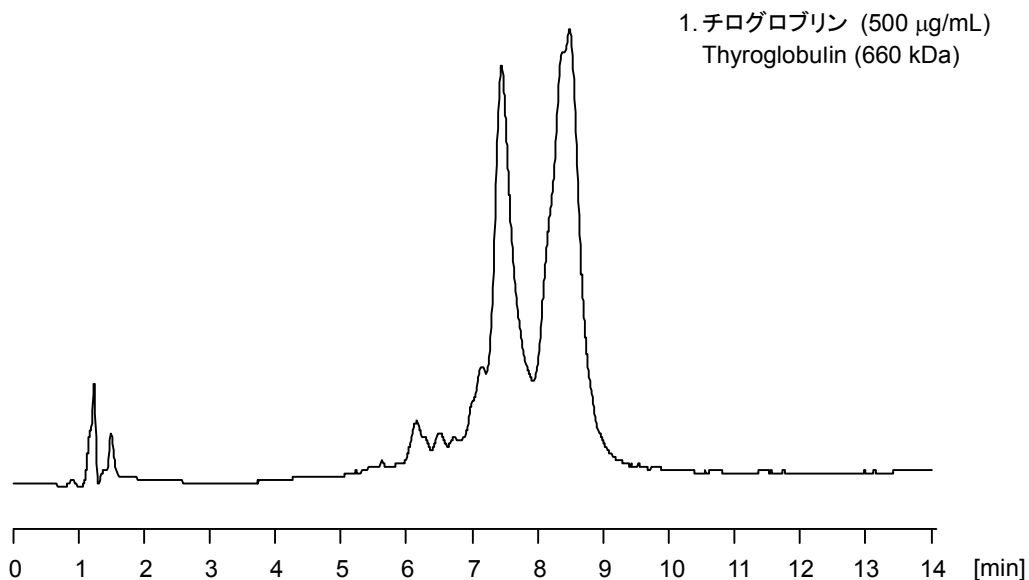
## チログロブリン

## Thyroglobulin

チログロブリンは甲状腺の上皮細胞で合成され濾胞に貯留する高分子の糖タンパク質で、甲状腺ホルモンのチロキシン (T4) やトリヨードチロニン (T3) の前駆体です。

CAPCELL CORE WP S2.7 (2.1 mm i.d. x 100 mm) を用いた分析例を紹介します。

Thyroglobulin, a precursor of thyroid hormones, such as thyroxin (T4) and triiodothyronine (T3), is a large glycoprotein synthesized in epithelial cells of the thyroid gland, and kept in follicles. The protein was analyzed with CAPCELL CORE WP S2.7 (2.1 mm i.d. x 100 mm).



### 【HPLC Conditions】

Column : CAPCELL CORE WP S2.7 ; 2.1 mm i.d. x 100 mm  
Mobile phase : A) 0.1 vol% TFA , B) 0.1 vol% TFA , CH<sub>3</sub>CN  
B 20 % (0 min) → 80 % (10 min) → 20 % (10.1 min) Gradient  
Flow rate : 200 µL/min  
Temperature : 40 °C  
Detection : UV 280 nm  
Inj. vol. : 2 µL  
Sample dissolved in : Thyroglobulin was dissolved at 1 mg/mL in H<sub>2</sub>O, and then diluted to 500 µg/mL with H<sub>2</sub>O.  
※ 1 µg/mL = 1 ppm