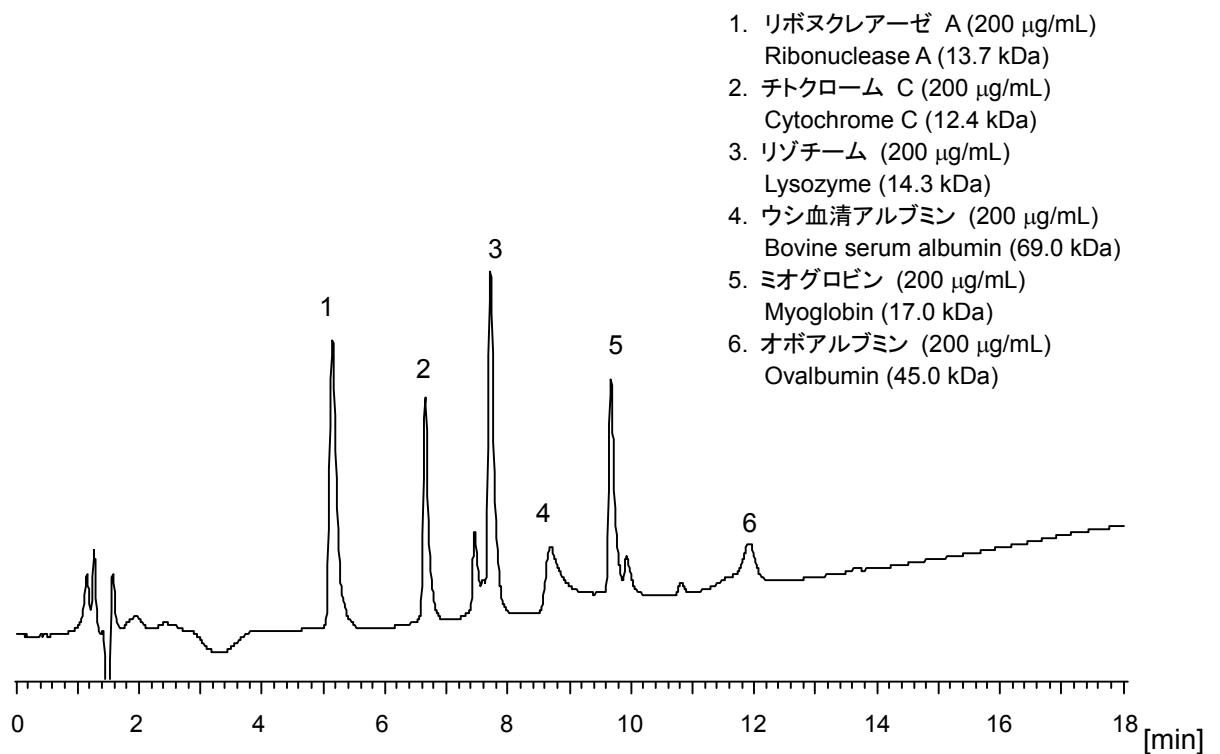


標準タンパク質 6 種類について CAPCELL CORE WP S2.7 (2.1 mm i.d. x 100 mm) を用いた分析例を紹介します。

The chromatogram below was separation of six representative proteins obtained with CAPCELL CORE WP S2.7 (2.1 mm i.d. x 100 mm).

**【HPLC Conditions】**

Column : CAPCELL CORE WP S2.7 ; 2.1 mm i.d. x 100 mm
Mobile phase : A) 0.1 vol% TFA, B) 0.1 vol% TFA , CH₃CN
B 20 % (0 min) → 70 % (20 min) → 20 % (20.1 min) Gradient
Flow rate : 200 μL/min
Temperature : 40 °C
Detection : UV 220 nm
Inj. vol. : 2 μL
Sample dissolved in : Each standard was dissolved at 2 mg/mL in H₂O. 100 μL of all solutions were added together, and diluted to 1 mL with H₂O.

※ 1 μg/mL = 1 ppm