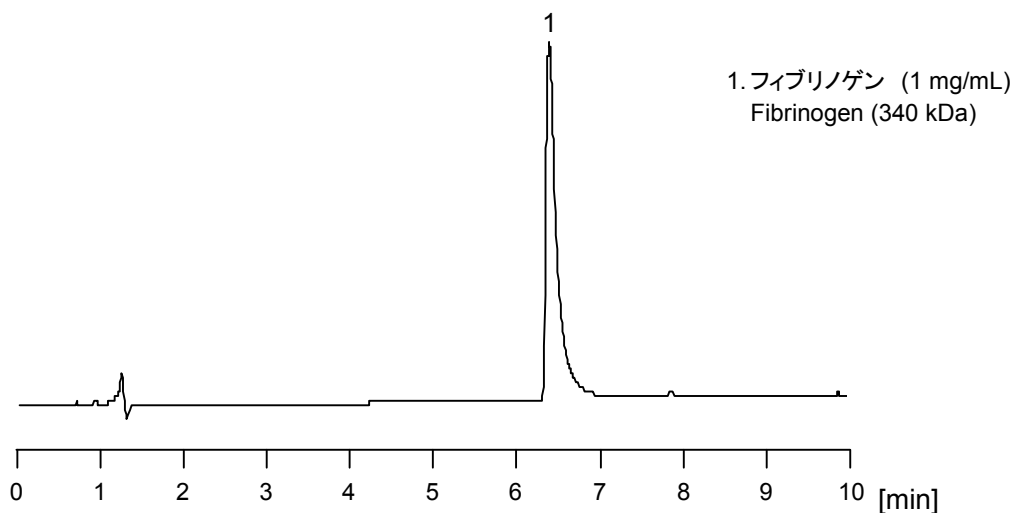


フィブリノゲン

Fibrinogen

フィブリノゲンは血液凝固に関わる因子で、血漿中に0.2~0.4%含まれている分子量約34万の糖タンパク質です。CAPCELL CORE WP S2.7 (2.1 mm i.d. x 100 mm) を用いた分析例を紹介します。

Fibrinogen, or a 340-kDa glycoprotein contained in blood plasma at 0.2-0.4 %, helps blood clots to form. The chromatogram below was obtained with CAPCELL CORE WP S2.7 (2.1 mm i.d. x 100 mm).



【HPLC Conditions】

Column : CAPCELL CORE WP S2.7 ; 2.1 mm i.d. x 100 mm
Mobile phase : A) 0.1 vol% TFA , B) 0.1 vol% TFA , CH₃CN
B 20 % (0 min) → 80 % (10 min) → 20 % (10.1 min) Gradient
Flow rate : 200 μL/min
Temperature : 40 °C
Detection : UV 280 nm
Inj. vol. : 2 μL
Sample dissolved in : Fibrinogen was dissolved in H₂O at 1 mg/mL.

※ 1 μg/mL = 1 ppm