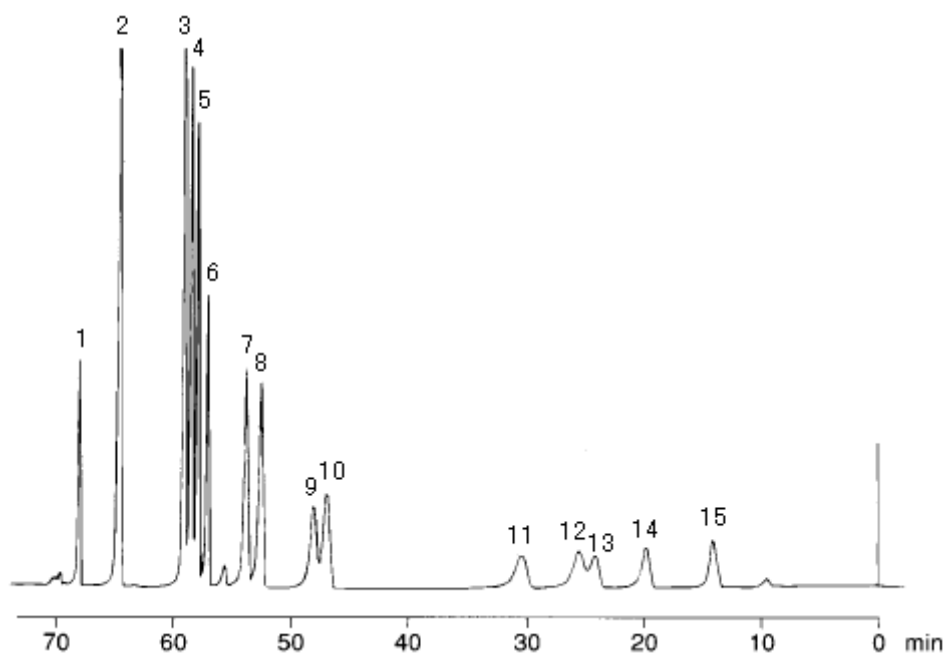


Data provided by : Dr.Wadano, College of agriculture, Osaka Prefecture University



1 Dns-Tyrosine(Tyr)	2 Dns-Di-Lysine	3 Dns-Phenylalanine(Phe)
4 Dns-Leucine(Leu)	5 Dns-Isoleucine(Ileu)	6 Dns-Tryptophan(Trp)
7 Dns-Methionine(Met)	8 Dns-Valine(Val)	9 Dns-Proline(Pro)
10 Dns-Arginine(Arg)	11 Dns-Alanine(Ala)	12 Dns-Threonine(Thr)
13 Dns-Glycine iGly j	14 Dns-Serine(Ser)	15 Dns-Asparticacid(Asp)

#### HPLC Conditions

Column	CAPCELL PAK C8 AG120 S5 : 4.6 mm i.d.×250 mm
Mobile phase	(A) 10mmol/L Tris buffer (pH7.75) / CH <sub>3</sub> OH = 10 / 3 (B) CH <sub>3</sub> OH B 0% - 25% (35min) - 80% (60min) - 100% (65min) Gradient
Flow rate	1.0 mL/min
Detect	FL