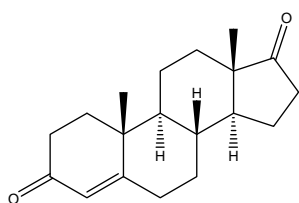


## ステロイドホルモン及び関連化合物

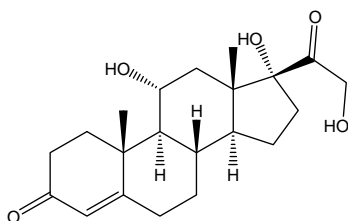
## Steroid hormones

エチニルエストラジオール及び、ステロイド生合成経路に関与しているステロイドホルモン8種の分析例を示します。カラムはCAPCELL PAK ADME S5 (4.6 mm i.d. x 150 mm)を用いました。

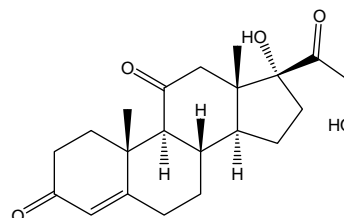
Ethinylestradiol, or a synthetic estrogen, and eight kinds of steroid hormones were analyzed together with CAPCELL PAK ADME S5 (4.6 mm i.d. x 150 mm).



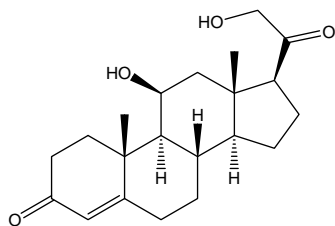
1. アルドステロン (50 µg/mL)  
Aldosterone (M.W. 360.4)



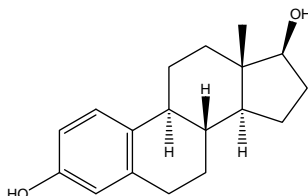
2. コルチゾール (50 µg/mL)  
Cortisol (M.W. 362.5)



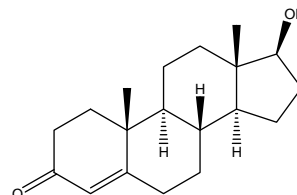
3. コルチゾン (50 µg/mL)  
Cortisone (M.W. 360.5)



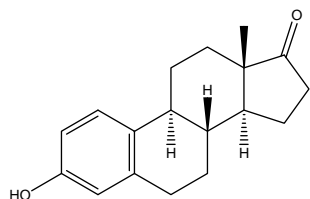
4. コルチコステロン (50 µg/mL)  
Corticosterone (M.W. 346.5)



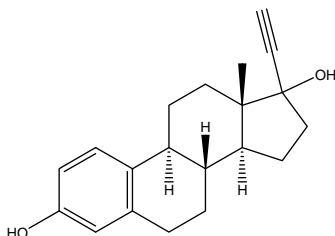
5. 17β-エストラジオール (50 µg/mL)  
17β-Estradiol (M.W. 272.4)



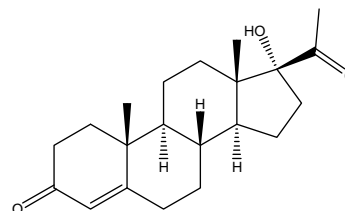
6. テストステロン (50 µg/mL)  
Testosterone (M.W. 288.4)



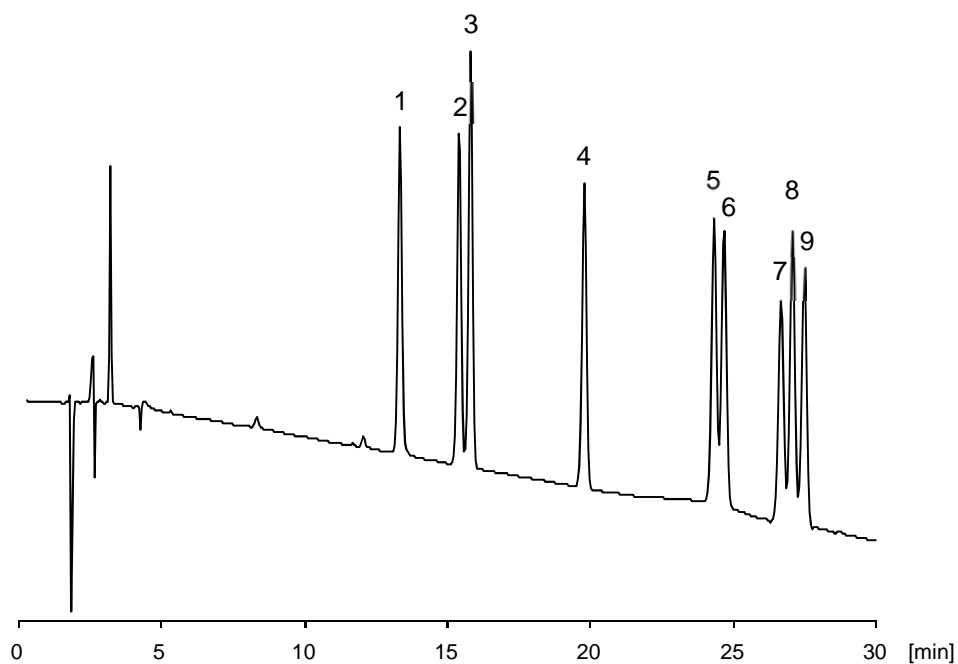
7. エストロン (50 µg/mL)  
Estrone (M.W. 270.4)



8. エチニルエストラジオール (50 µg/mL)  
Ethinylestradiol (M.W. 296.4)



9. 17α-ヒドロキシプロゲステロン (50 µg/mL)  
17α-Hydroxyprogesterone (M.W. 330.5)



**【HPLC Conditions】**

Column : CAPCELL PAK ADME S5 ; 4.6 mm i.d. x 150 mm  
 Mobile phase : A) 5 mmol/L HCOONH<sub>4</sub>, B) CH<sub>3</sub>CN  
                   B 20 % (0 min) -> 55 % (30 min) -> 20 % (30.1 min) Gradient  
 Flow rate : 1 mL/min  
 Temperature : 40 °C  
 Detection : UV 220 nm  
 Inj. vol. : 25 µL  
 Sample dissolved in : Each compound was dissolved in THF at 1 mg/mL,  
                               50 µL of all the solutions were added together, and diluted to  
                               1 mL with the H<sub>2</sub>O.  
                               ※ 1 µg/mL = 1 ppm