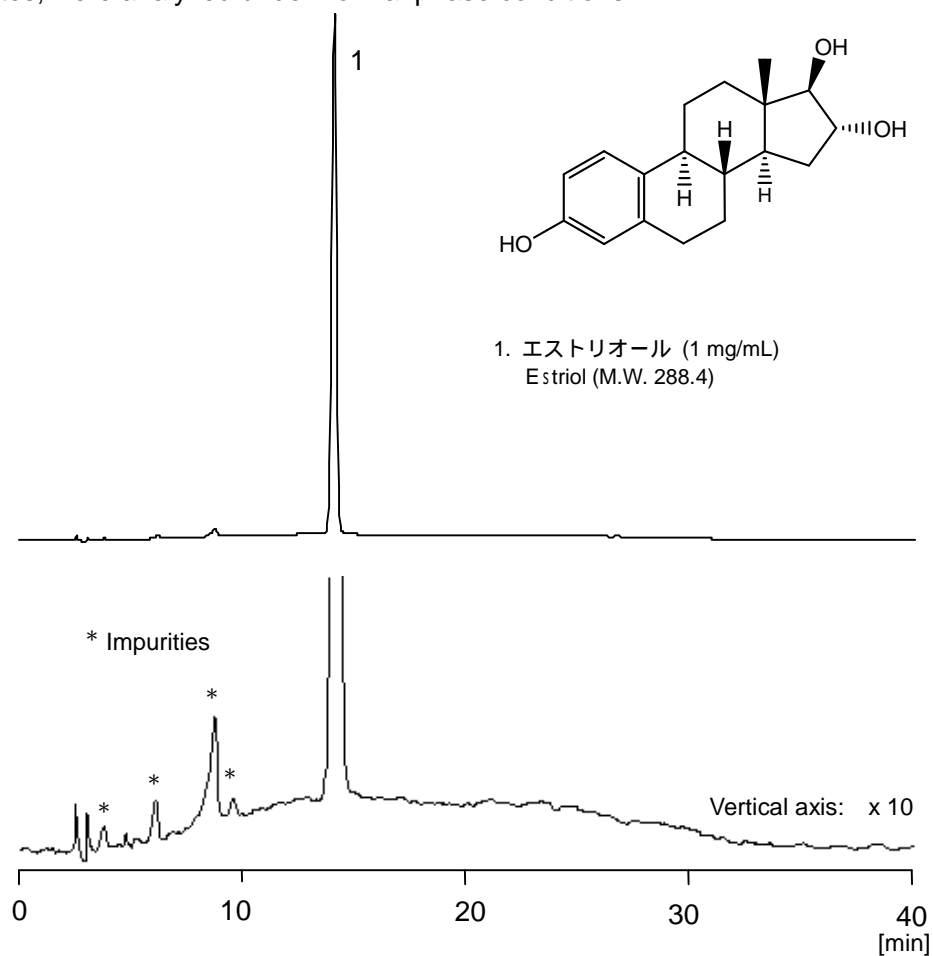


EPの方法に従い、女性ホルモンの一種、エストリオール、及び含有される不純物を順相条件により分析した例を示します。

According to the European Pharmacopoeia, estriol, one of the female hormones, and its impurities, were analyzed under normal-phase conditions.



【HPLC Conditions】

Column : SILICA SG120 S5 ; 4.6 mm i.d. x 250 mm
 Mobile phase : A) Hexane, B) IPA
 B 5 % (0 min) 12 % (10 min) 12 % (20 min)
 5 % (30 min) 5 % (40 min) Gradient
 Flow rate : 1.2 mL/min
 Temperature : 40 °C
 Detection : UV 280 nm
 Inj. vol. : 20 µL
 Sample dissolved in : The standard compound was dissolved in IPA at 4 mg/mL.
 The solution was further diluted four-fold with IPA / hexane
 = 20 / 80.
 1 µg/mL = 1 ppm