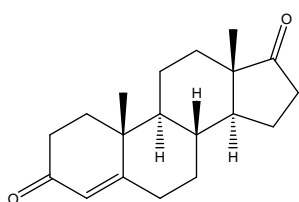


ステロイドホルモン及び関連化合物

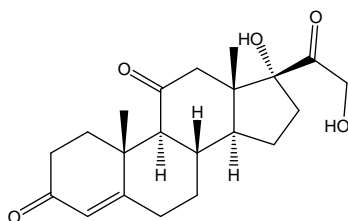
Steroid hormones

合成エストロゲン，エチニルエストラジオールとステロイドホルモン 8 種の分析例を示します．カラムは CAPCELL CORE ADME S2.7 (2.1 mm i.d. x 50 mm) を用いました．

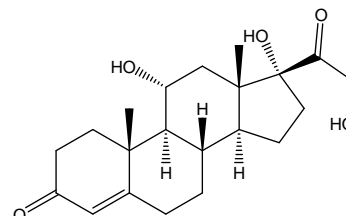
Ethinylestradiol, or a synthetic estrogen, and eight kinds of steroid hormones were analyzed together with CAPCELL CORE ADME S2.7 (2.1 mm i.d. x 50 mm).



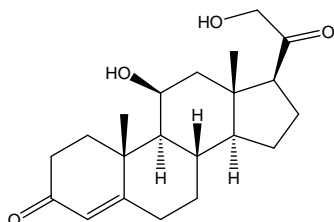
1. アルドステロン (50 $\mu\text{g/mL}$)
Aldosterone (M.W. 360.4)



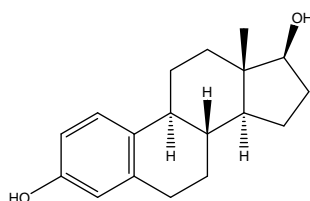
2. コルチゾール (50 $\mu\text{g/mL}$)
Cortisol (M.W. 362.5)



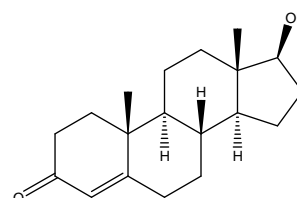
3. コルチゾン (50 $\mu\text{g/mL}$)
Cortisone (M.W. 360.5)



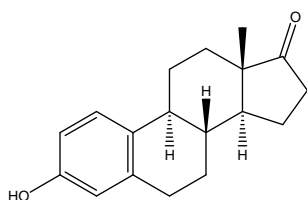
4. コルチコステロン (50 $\mu\text{g/mL}$)
Corticosterone (M.W. 346.5)



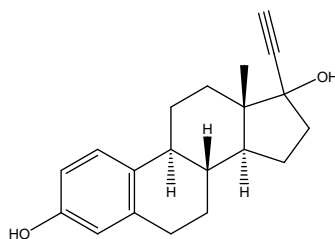
5. 17 β -エストラジオール (50 $\mu\text{g/mL}$)
17 β -Estradiol (M.W. 272.4)



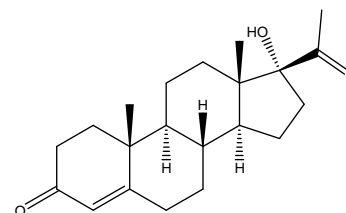
6. テストステロン (50 $\mu\text{g/mL}$)
Testosterone (M.W. 288.4)



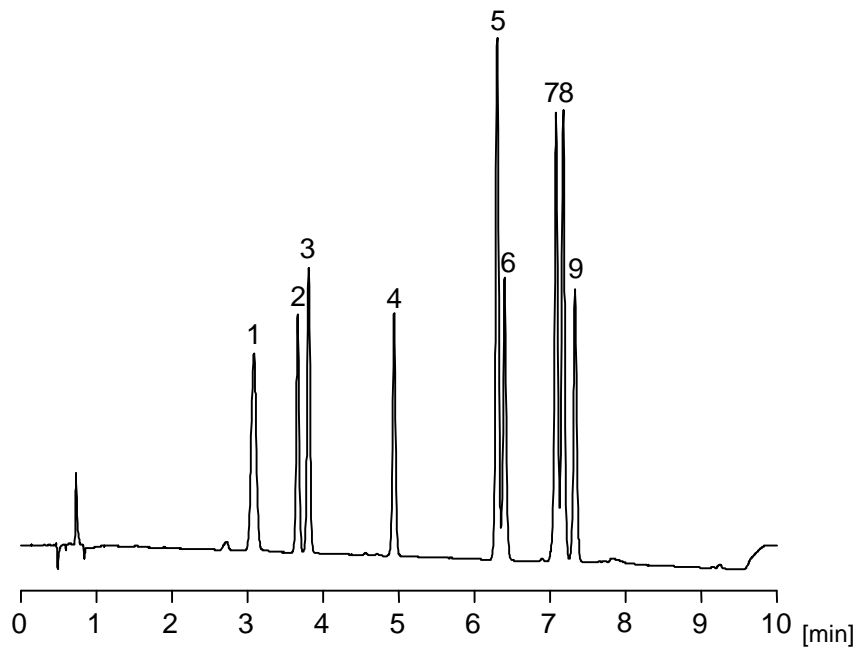
7. エストロン (50 $\mu\text{g/mL}$)
Estrone (M.W. 270.4)



8. エチニルエストラジオール (50 $\mu\text{g/mL}$)
Ethinylestradiol (M.W. 296.4)



9. 17 α -ヒドロキシプロゲステロン (50 $\mu\text{g/mL}$)
17 α -Hydroxyprogesterone (M.W. 330.5)



【HPLC Conditions】

Column : CAPCELL CORE ADME S2.7 ; 2.1 mm i.d. x 50 mm
 Mobile phase : A) 5 mmol/L HCOONH₄ B) CH₃CN
 B 20 %(0 min) 55 %(9.0 min) 20 %(9.1 min) Gradient
 Flow rate : 400 μL/min
 Temperature : 40 °C
 Detection : PDA 220 nm
 Inj. vol. : 5 μL
 Sample dissolved in : Each compound was dissolved in THF at 1 mg/mL,
 50 μL of all the solutions were added together, and diluted to
 1 mL with the H₂O.
 1 μg/mL = 1 ppm