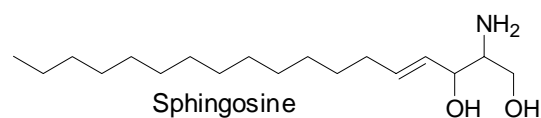


スフィンゴ脂質

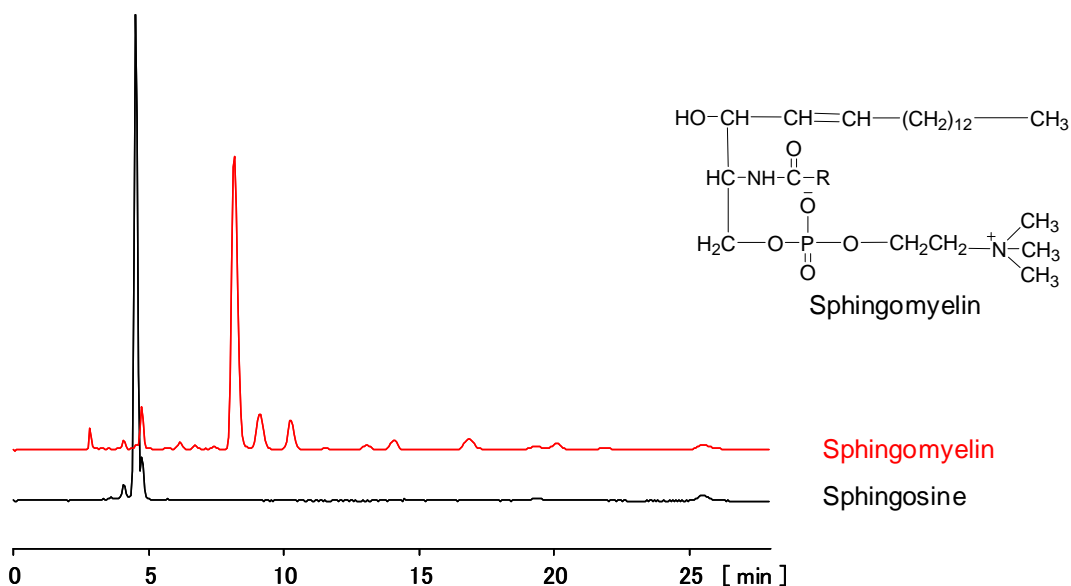
Sphingolipids

光学的検出の困難なスフィンゴ脂質，スフィンゴシン，およびスフィンゴミエリンを CAPCELL PAK C₁₈ MGIII と Corona[®] CAD[®] を組み合わせた分析例です。

Spingosine and sphingomyelin, the compounds hard to detect with an optical detector, were separated with a MGIII column, and detected with a Corona charged aerosol detector (CAD).



(※ m/z 301 [M+H]⁺ was confirmed with MS.)



Sphingolipids

【HPLC Conditions】

Column : CAPCELL PAK C₁₈ MGIII S5 ; 2.0 mm i.d. x 250 mm
Mobile phase : CH₃OH
Flow rate : 200 μL/min
Temperature : 40 °C
Detection : Corona CAD
Inj. vol. : 10 μL
Sample dissolved in : Spingosine was dissolved in chloroform at 10 mg/mL,
and then, diluted to 1 mg/mL with methanol.
Sphingomyelin was dissolved in chloroform at 1 mg/mL.