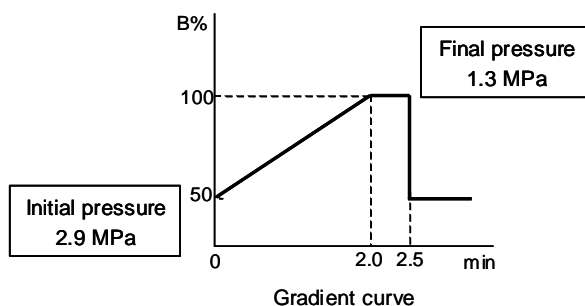
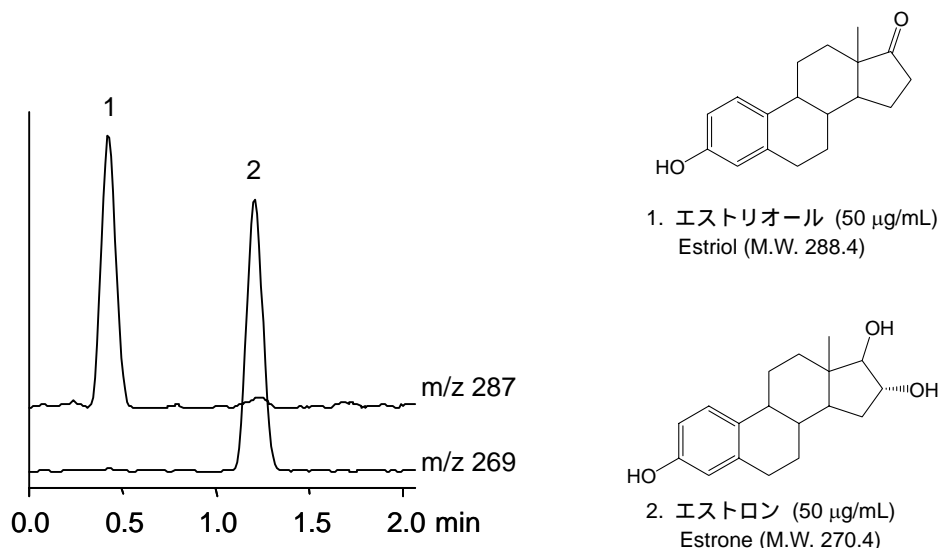


エストロゲン

Estrogens

著しく短いセミマイクロカラムを使用することで、低圧下で高速分析をすることが可能となります。

An extremely short semi-microcolumn makes it possible to run a rapid analysis under a low pressure.



【HPLC Conditions】

Column : CAPCELL PAK C₁₈ MGII S3 ; 1.5 mm i.d. x 10 mm
Mobile phase : A) H₂O, B) CH₃OH
B 50% (0.0 min) -> 100% (2.0 min) -> 100% (2.5 min) -> 50% (2.5 min) Gradient
Flow rate : 200 µL/min
Temperature : 40 °C
Detection : MS ESI Negative
Inj. vol. : 2 µL
Sample dissolved in : Both compounds were separately dissolved in methanol at 1 mg/mL. 50 µL of both solutions were added together, and the mixture was diluted to 1 mL with 50% methanol (50 µg/mL each).
※ 1 µg/mL = 1 ppm