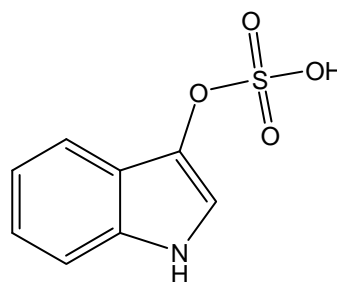
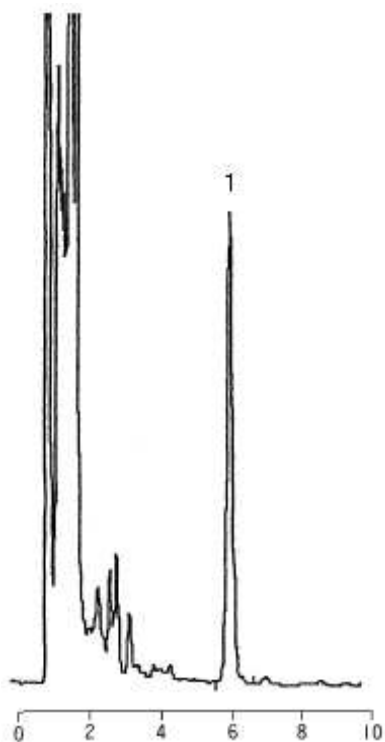


腎不全動物の尿中インドキシル硫酸

Animal suffering from renal insufficiency in urine of Indoxylsulfate



1. インドキシル硫酸
Indoxylsulfate (M.W. 213.2)

【HPLC Conditions】

Column	: CAPCELL PAK MF Ph-1 ; 2.0 mm i.d. x 150 mm
Mobile phase	: 50 mmol/L CH ₃ COONH ₄
Flow rate	: 200 μL/min
Temperature	: 35 °C
Detection	: FL Ex. 295 nm, Em. 390 nm
Inj. vol.	: 1 μL
Sample dissolved in	: The sample (urine) was filtered with a 0.45-μm filter.