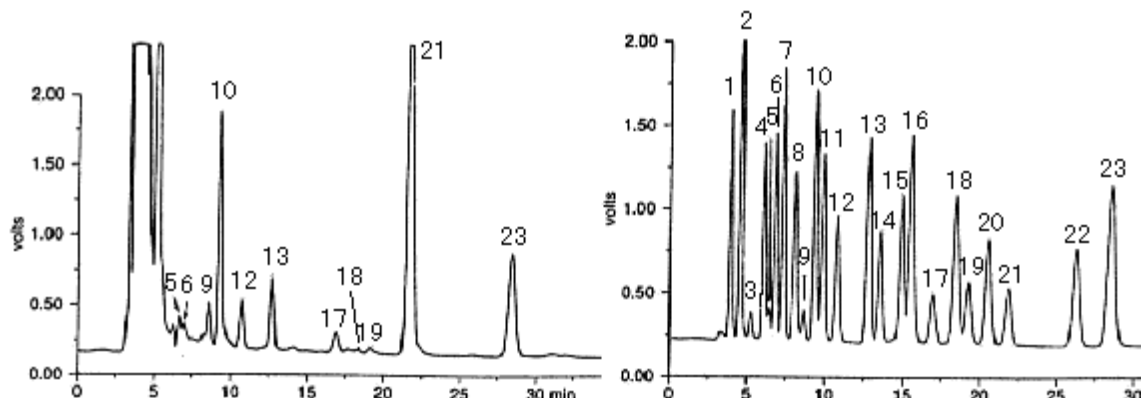


Data provided by : Dr.Nagao, Hokkaido University



1	3,4-Dihydroxymandelic acid Standard 100 ng/mL	2	3-Methoxy-4-hydroxymandelic acid, 3,4-Dihydroxyphenylalanine Standard 100 ng/mL	3	Tyrosine Standard 100 ng/mL
4	3-Methoxy-4-hydroxyphenylglycol Standard 100 ng/mL	5	<i>N</i> -Acetyloctopamine Standard 100 ng/mL	6	Norepinephrine Standard 100 ng/mL
7	5-Hydroxy-L-tryptophan Standard 100 ng/mL	8	Epinephrine Standard 100 ng/mL	9	Octopamine Standard 100 ng/mL
10	3,4-Dihydroxybenzylamine Standard 100 ng/mL	11	3,4-Dihydroxyphenylacetic acid Standard 100 ng/mL	12	<i>N</i> -Acetyldopamine, Synephrine Standard 100 ng/mL
13	Dopamine Standard 100 ng/mL	14	Metanephrine Standard 100 ng/mL	15	Deoxyepinephrine Standard 100 ng/mL
16	5-Hydroxyindolacetic acid Standard 100 ng/mL	17	<i>N</i> -Acetyltyramine Standard 100 ng/mL	18	<i>N</i> -Acetyl-5-hydroxytryptamine Standard 100 ng/mL
19	Tyramine Standard 100 ng/mL	20	3-Methoxy-4-hydroxyphenylacetic acid Standard 100 ng/mL	21	Tryptophan Standard 100 ng/mL
22	3-Methoxytyramine Standard 100 ng/mL	23	5-Hydroxytryptamine Standard 100 ng/mL	24	5-Hydroxymelatonin Standard 100 ng/mL

HPLC Conditions

Column	CAPCELL PAK C ₁₈ SG120 S3 : 4.6 mm i.d.×250 mm
Mobile phase	180mmol/L CH ₂ ClCOOH, 50μmol/L EDTA-2Na, 160mmol/L NaOH, 395mg/L Sodium octane sulfonate, 85mL/L CH ₃ CN, pH3.6
Flow rate	0.7 mL/min
Temperature	30 °C
Detect	ECD 950 mV
Inj. vol.	5 μL