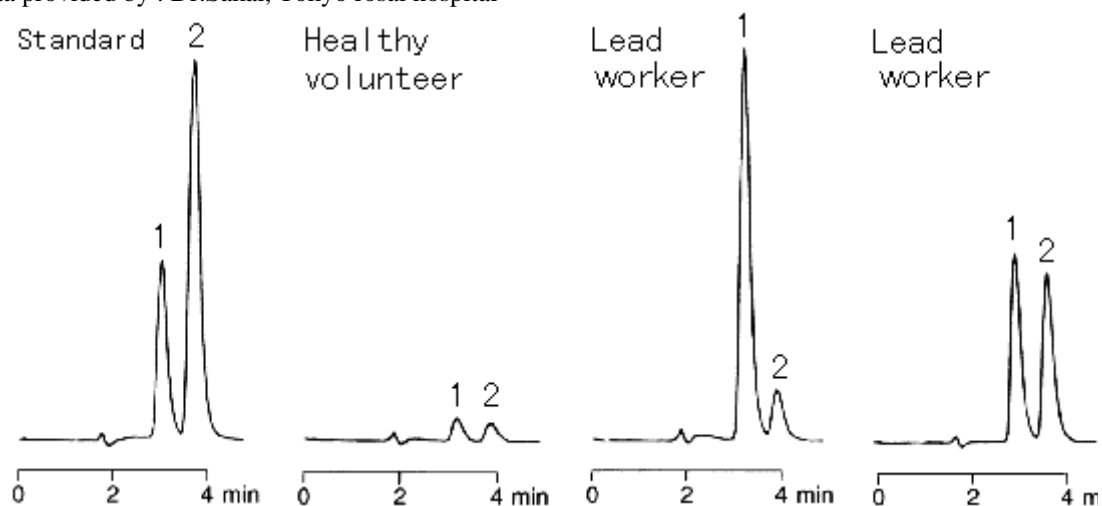


Data provided by : Dr.Sakai, Tokyo rosai hospital



1 Zinc protoporphyrin

2 Protoporphyrin

HPLC Conditions

Column CAPCELL PAK C₁₈ AG120 S5 : 4.6 mm i.d.×250 mm

Mobile phase CH₃CN / 50mmol/L Tetra butyl ammonium hydride (pH7.5) = 66 / 34

Flow rate 1.0 mL/min

Temperature 40 °C

Detect FL Ex. 420 nm, Em. 630 nm