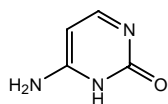


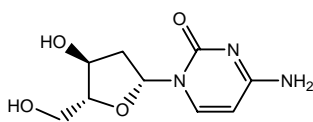
- | | |
|--|---|
| 1. シトシン (10 µg/mL)
Cytosine (M.W. 111.1) | 8. ウリジン (5 µg/mL)
Uridine (M.W. 244.2) |
| 2. デオキシシチジン (10 µg/mL)
Deoxycytidine (M.W. 227.2) | 9. チミン (10 µg/mL)
Thymine (M.W. 126.1) |
| 3. アデニン (10 µg/mL)
Adenine (M.W. 135.1) | 10. イノシン (10 µg/mL)
Inosine (M.W. 268.2) |
| 4. ウラシル (10 µg/mL)
Uracil (M.W. 112.1) | 11. グアノシン (10 µg/mL)
Guanosine (M.W. 283.2) |
| 5. グアニン (10 µg/mL)
Guanine (M.W. 151.1) | 12. アデノシン (10 µg/mL)
Adenosine (M.W. 267.2) |
| 6. ヒポキサンチン (10 µg/mL)
Hypoxanthine (M.W. 136.1) | 13. デオキシグアノシン (10 µg/mL)
Deoxyguanosine (M.W. 267.2) |
| 7. キサンチン (10 µg/mL)
Xanthine (M.W. 152.1) | 14. デオキシアデノシン (50 µg/mL)
Deoxyadenosine (M.W. 251.2) |

【HPLC Conditions】

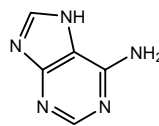
Column	: CAPCELL PAK C ₁₈ MGIII S5 ; 2.0 mm i.d. x 250 mm
Mobile phase	: A) 0.1 vol% CH ₃ COOH, B) CH ₃ OH B 2% (0 min) -> 20% (10 min) -> 20% (13 min) -> 2% (13 min) Gradient
Flow rate	: 200 μL/min
Temperature	: 40 °C
Detection	: MS ESI Positive
Inj. vol.	: 2 μL
Sample dissolved in	: 10 μL of guanine (1 mg/mL in 0.1 mol/L KOH), 10 μL of xanthin (1 mg/mL in 0.1 mol/L NaOH), 10 μL of uridine (0.5 mg/mL in 1% HCOOH), 50 μL of deoxyadenosine (1 mg/mL in 1% HCOOH) and 10 μL of other solutions (1 mg/mL in 1% HCOOH) were mixed together, and diluted to 1 mL with water. [Sonication (30 min) is necessary to dissolve some of the compounds.] ※ 1 μg/mL = 1 ppm



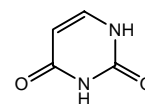
1. Cytosine



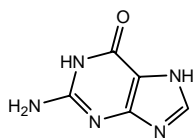
2. Deoxycytidine



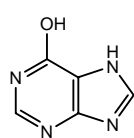
3. Adenine



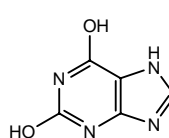
4. Uracil



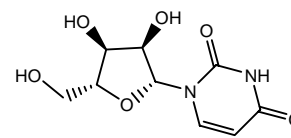
5. Guanine



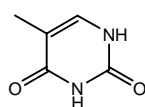
6. Hypoxanthine



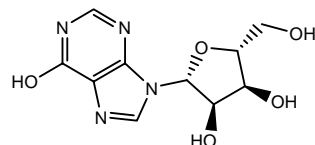
7. Xanthine



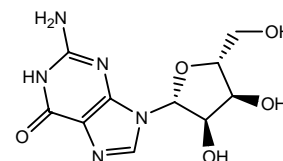
8. Uridine



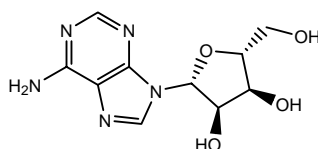
9. Thymine



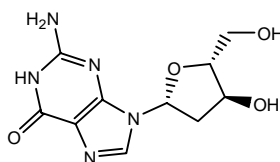
10. Inosine



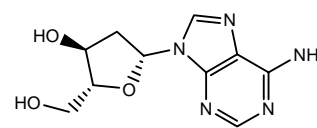
11. Guanosine



12. Adenosine



13. Deoxyguanosine



14. Deoxyadenosine